

**TECHNICAL MANUAL**

**GENERAL SUPPORT MAINTENANCE REPAIR PARTS AND SPECIAL TOOLS LISTS  
(INCLUDING DEPOT MAINTENANCE REPAIR PARTS AND SPECIAL TOOLS)  
FOR  
TEST SET, RADAR ALTIMETER MODULE AN/APM-322  
(NSN 6625-00-437-7312)**

---

**HEADQUARTERS, DEPARTMENT OF THE ARMY**

**DECEMBER 1977**



**GENERAL SUPPORT MAINTENANCE REPAIR PARTS AND SPECIAL TOOLS LISTS  
(INCLUDING DEPOT MAINTENANCE REPAIR PARTS AND SPECIAL TOOLS)  
TEST SET, RADAR ALTIMETER MODULE AN/APM-322  
(NSN 6625-00437-7312)**

*Current as of 13 September 1977*

**REPORTING OF ERRORS**

You can improve this manual by recommending improvements using DA Form 2028-2 (Test) located in the back of the manual. Simply tear out the self-addressed form, fill it out as shown on the sample, fold it where shown, and drop it in the mail.

If there are no blank DA Forms 2028-2 (Test) in the back of your manual, use the standard DA Form 2028 (Recommended Changes to Publications and Blank Forms) and forward to the Commander, US Army Electronics Command, ATTN: DRSELMA-Q, Fort Monmouth, New Jersey 07703.

In either case a reply will be furnished direct to you.

**Table of Contents**

		Page	Illus Figure
SECTION	I.	Introduction .....	1
	II.	Repair parts list .....	5
Group	00	Radar Altimeter Module ANIAPM-322 Test Set.....	5      1,2
	01	Test set, radar altimeter module (2A1) .....	11      3
		0101 Power supply subassembly .....	15      4
		010101 Power supply subassembly No. 1 .....	17      5
		010102 Power supply subassembly No. 2.....	19      6
		010103 Power supply subassembly No. 3.....	23      7
		0102 Intermediate frequency amplifier .....	25      8
		010201 Amplifier detector assembly (2AIA3TB1) .....	29      9
	02	CG-3594/U (2W1, 2W2) .....	31      10
	03	CX-12198/APM-322 .....	31      10
	04	CX-121991APM-322 (2W5) .....	31      10
	05	CX-122001APM-322 (2W7) .....	31      10
	06	CX-122011APM-322 (2W9) .....	31      10
	07	CX-12364/APM-322 (2W10) .....	31      10
SECTION	III.	Special tool list (Not applicable)	
	IV.	National stock number and part number index .....	33

\*This manual supersedes TM 11-6625-1795-40P, 10 July 1974.

SECTION I

INTRODUCTION

1. Scope

This manual lists spares and repair parts; special tools; special test, measurement, and diagnostic equipment (TMDE), and other special support equipment required for performance of general support maintenance of the AN/APM-322. It authorizes the requisitioning and issue of spares and repair parts as indicated by the source and maintenance codes.

2. General

This Repair Parts and Special Tools List is divided into the following sections:

a. *Section II. Repair Parts List.* A list of spares and repair parts authorized for use in the performance of maintenance. The list also includes parts which must be removed for replacement of the authorized parts. Parts lists are composed of functional groups in numeric sequence, with the parts in each group listed in figure and item number sequence.

b. *Section III. Special Tools List. Not applicable.*

c. *Section IV. National Stock Number and Part Number Index.* A list, in National item identification number (NIIN) sequence, of all National stock numbers (NSN) appearing in the listings, followed by a list, in alphameric sequence, of all part numbers appearing in the listings. National stock numbers and part numbers are cross-referenced to each illustration figure and item number appearance.

3. Explanation of Columns

a. *Illustration.* This column is divided as follows:

(1) *Figure number.* Indicates the figure number of the illustration on which the item is shown.

(2) *Item number.* The number used to identify item called out in the illustration.

b. *Source, Maintenance, and Recoverability (SMR) Codes.*

(1) *Source code.* Source codes indicate the manner of acquiring support items for maintenance, repair, or overhaul of end items. Source codes are entered in the first and second positions of the Uniform SMR Code format as follows:

<i>Code</i>	<i>Definition</i>
PA-	Item procured and stocked for anticipated or known usage.
XD-	A support item that is not stocked. When required, item will be procured through normal supply channels.

NOTE

**Cannibalization or salvage may be used as a source of supply for any items source coded above except those coded XA and aircraft support items as restricted by AR 700-42.**

(2) *Maintenance code.* Maintenance codes are assigned to indicate the levels of maintenance authorized to USE and REPAIR support items. The maintenance codes are entered in the third and fourth positions of the Uniform SMR Code format as follows:

(a) The maintenance code entered in the third position will indicate the lowest maintenance level authorized to remove, replace, and use the support item. The maintenance code entered in the third position will indicate one of the following levels of maintenance:

<i>Code</i>	<i>Application/Explanation</i>
O-	Support item is removed, replaced, used at the organizational level.
H-	Support item is removed, replaced, used at the general support level.
D-	Support items that are removed, replaced, used at depot, mobile depot, specialized repair activity only.

(b) The maintenance code entered in the fourth position indicates whether the item is to be repaired and identifies the lowest maintenance level with the capability to perform complete repair (i.e., all authorized maintenance functions). This position will contain one of the following maintenance codes:

<i>Code</i>	<i>Application/Explanation</i>
H-	The lowest maintenance level capable of complete repair of the support item is the general support level.
D-	The lowest maintenance level capable of complete repair of the support item is the depot level.
Z-	Nonreparable. No repair is authorized.

(3) *Recoverability code.* Recoverability codes are assigned to support items to indicate the disposition action on unserviceable items. The recoverability code is entered in the fifth position of the Uniform SMR Code format as follows:

<i>Recoverability codes</i>	<i>Definition</i>
Z-	Nonreparable item. When unserviceable, condemn and dispose at the level indicated in position 3.
H-	Reparable item. When uneconomically repairable, condemn and dispose at the general support level.

*Recoverability codes*

*Definition*

D- Repairable item. When beyond lower level repair capability, return to depot. Condemnation and disposal not authorized below depot level.

L- Repairable item. Repair, condemnation, and disposal not authorized below depot/specialized repair activity level.

c. *National Stock Number.* Indicates the National stock number assigned to the item and will be used for requisitioning purposes.

d. *Part Number.* Indicates the primary number used by the manufacturer (individual, company, firm, corporation, or Government activity), which controls the design and characteristics of the item by means of its engineering drawings, specifications, standards, and inspection requirements to identify an item or range of items.

**NOTE**

**When a stock numbered item is requisitioned, the repair part received may have a different part number than the part being replaced.**

e. *Federal Supply Code for Manufacturer (FSCM).* The FSCM is a 5-digit numeric code listed in SB 708-42 which is used to identify the manufacturer, distributor, or Government agency, etc.

f. *Description.* Indicates the Federal item name and, if required, a minimum description to identify the item.

g. *Unit of Measure (U/M).* Indicates the standard of the basic quantity of the listed item as used in performing the actual maintenance function. This measure is expressed by a two-character alphabetical abbreviation (e.g., ea, in, pr, etc). When the unit of measure differs from the unit of issue, the lowest unit of issue that will satisfy the required units of measure will be requisitioned.

h. *Quantity Incorporated in Unit.* Indicates the quantity of the item used in the breakout shown on the

illustration figure, which is prepared for a functional group, subfunctional group, or an assembly.

**4. Special Information**

The following publications pertain to the AN/ APM-322 and its components:

TM 11-6625-1795-12, Test Set, Radar Altimeter Module AN/APM-322

TM 11-6625-1795-45, Test Set, Radar Altimeter Module AN/APM-322

**5. How to Locate Repair Parts**

a. When National stock number or part number is unknown.

(1) *First.* Using the table of contents, determine the functional group within which the item belongs. This is necessary since illustrations are prepared for functional groups and listings are divided into the same groups.

(2) *Second.* Find the illustration covering the functional group to which the item belongs.

(3) *Third.* Identify the item on the illustration and note the illustration figure and item number of the item.

(4) *Fourth.* Using the Repair Parts Listing, find the figure and item number noted on the illustration.

b. When National stock number or part number is known.

(1) *First.* Using the Index of National Stock Numbers and Part Numbers, find the pertinent National stock number or part number. This index is in NIIN sequence followed by a list of part numbers in alphameric sequence, cross-referenced to the illustration s figure number and item number.

(2) *Second.* After finding the figure and item number, locate the figure and item number in the repair parts list.

**6. Abbreviations**

Not applicable.

(Next printed page is 4)

2/3(Blank)

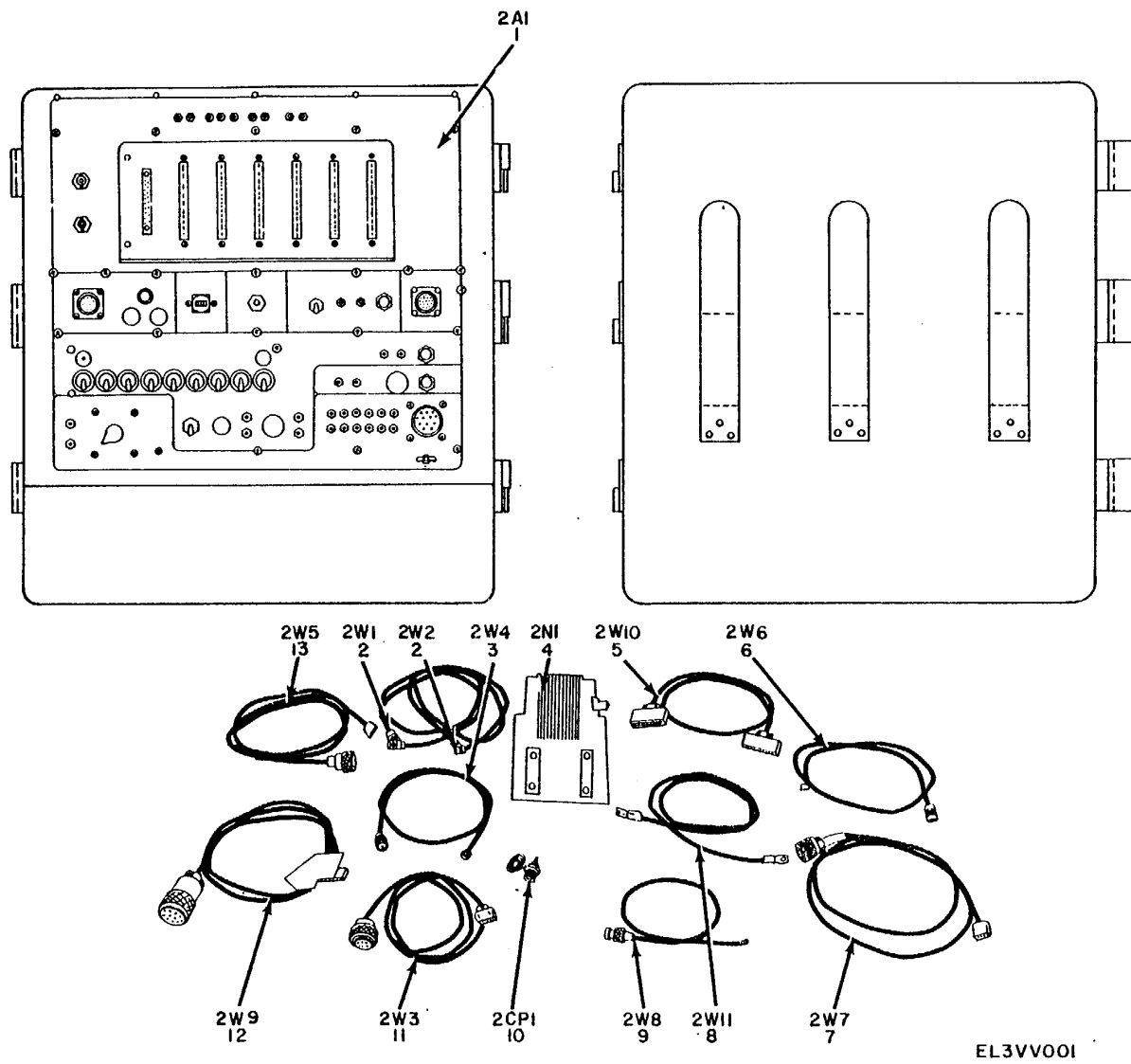
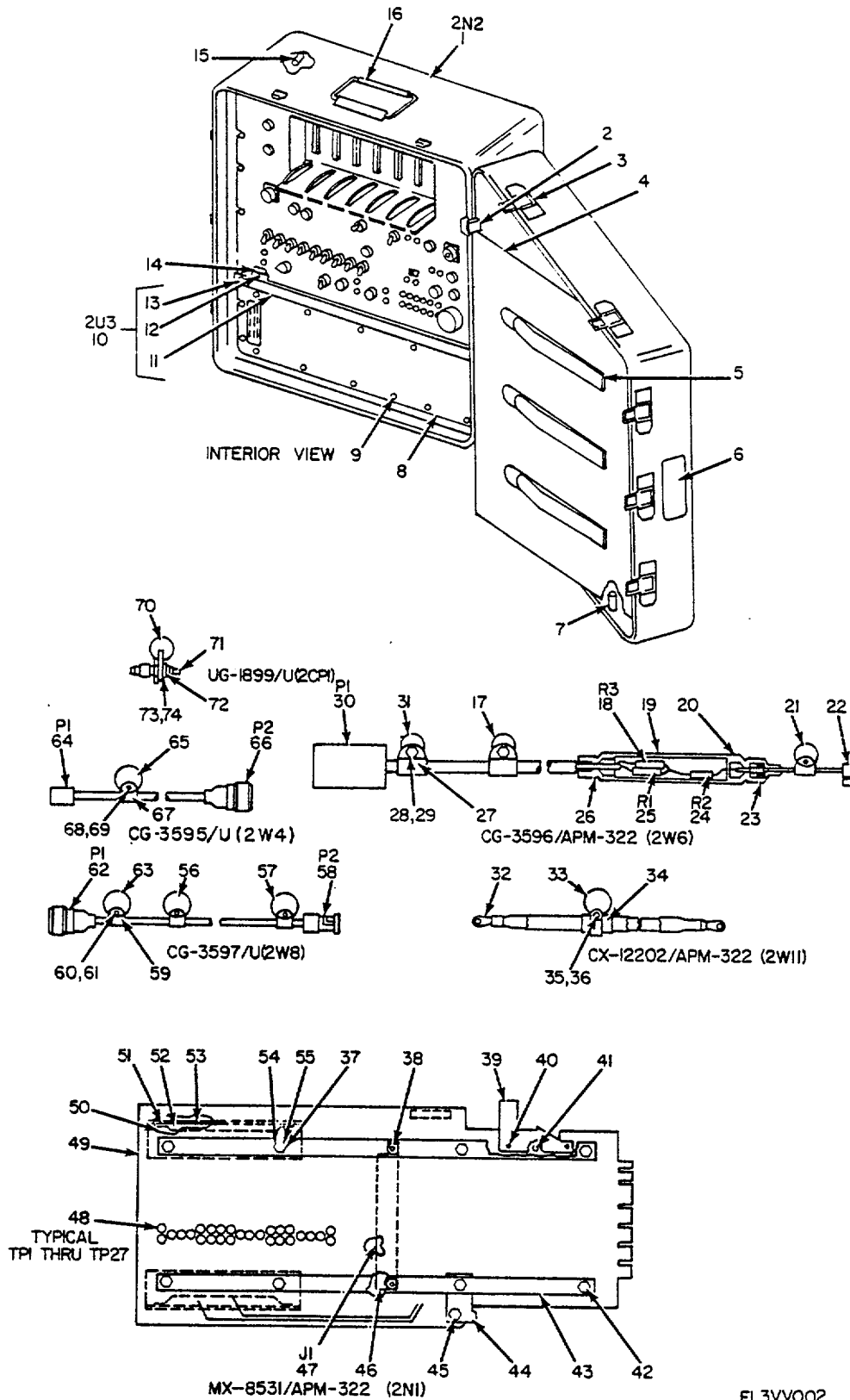


Figure 1. Radar Altimeter Module AN/APM-322 Test Set.

## SECTION II

TM 11-6625-1795-40P

(1) ILLUSTRATION		(2)	(3)	(4)	(5)	(6) DESCRIPTION	(7)	(8)
(a) FIG NO.	(b) ITEM NO.	SMR CODE	NATIONAL STOCK NUMBER	PART NUMBER	FSCM	USABLE ON CODE	U/M	QTY INC IN UNIT
						GROUP 00 RADAR ALTIMETER MODULE AN/APM-322		
						TEST SET		
1	1	PAHDD	6625-00-437-7310	TS2932APN322	80058	TEST SET, ROR ALTM	EA	1
1	2	PAOHH	5995-00-471-5727	CG3594U	80058	CABLE ASSY, RF	EA	2
1	3	PAOHH	5995-00-498-3981	CG3595U	80058	CABLE ASSY, RF	EA	1
1	4	PAOHH	6625-00-922-6053	MX8531APM322	80058	EXTENDER CARD ASSY	EA	1
1	5	PAOHH	6625-00-492-6132	CX12364APM322	80058	CABLE ASSY, SP, ELEC	EA	1
1	6	PAOHH	5995-00-477-3878	CG3596APM322	80058	CABLE ASSY, RF	EA	1
1	7	PAOHH	5995-00-477-3888	CX12200APM322	80058	CABLE ASSY, SP BR	EA	1
1	8	PAOHH	6625-00-484-5860	CX12202APM322	80058	LEAD, ELECTRICAL	EA	1
1	9	PAOHH	5995-00-477-3887	CG3597U	80058	CABLE ASSY, RF	EA	1
1	10	PAOHH	5935-00-938-0359	UG1899U	80058	ADAPTER, CONNECTOR	EA	1
1	11	PAOHH	5995-00-477-3879	CX12198APM322	80058	CABLE ASSY, SP ELEC	EA	1
1	12	PAOHH	5995-00-477-3880	CX12201APM322	80058	CABLE ASSY, SP ELEC	EA	1
1	13	PAOHH	5995-00-477-3886	CX12199APM322	80058	CABLE ASSY, SP ELEC	EA	1
					5			



EL3V002

Figure 2. Radar Altimeter Module AN/APM-322 Test Set, Cabinet and Accessory Breakdown.

## SECTION II

TM 11-6625-1795-40P

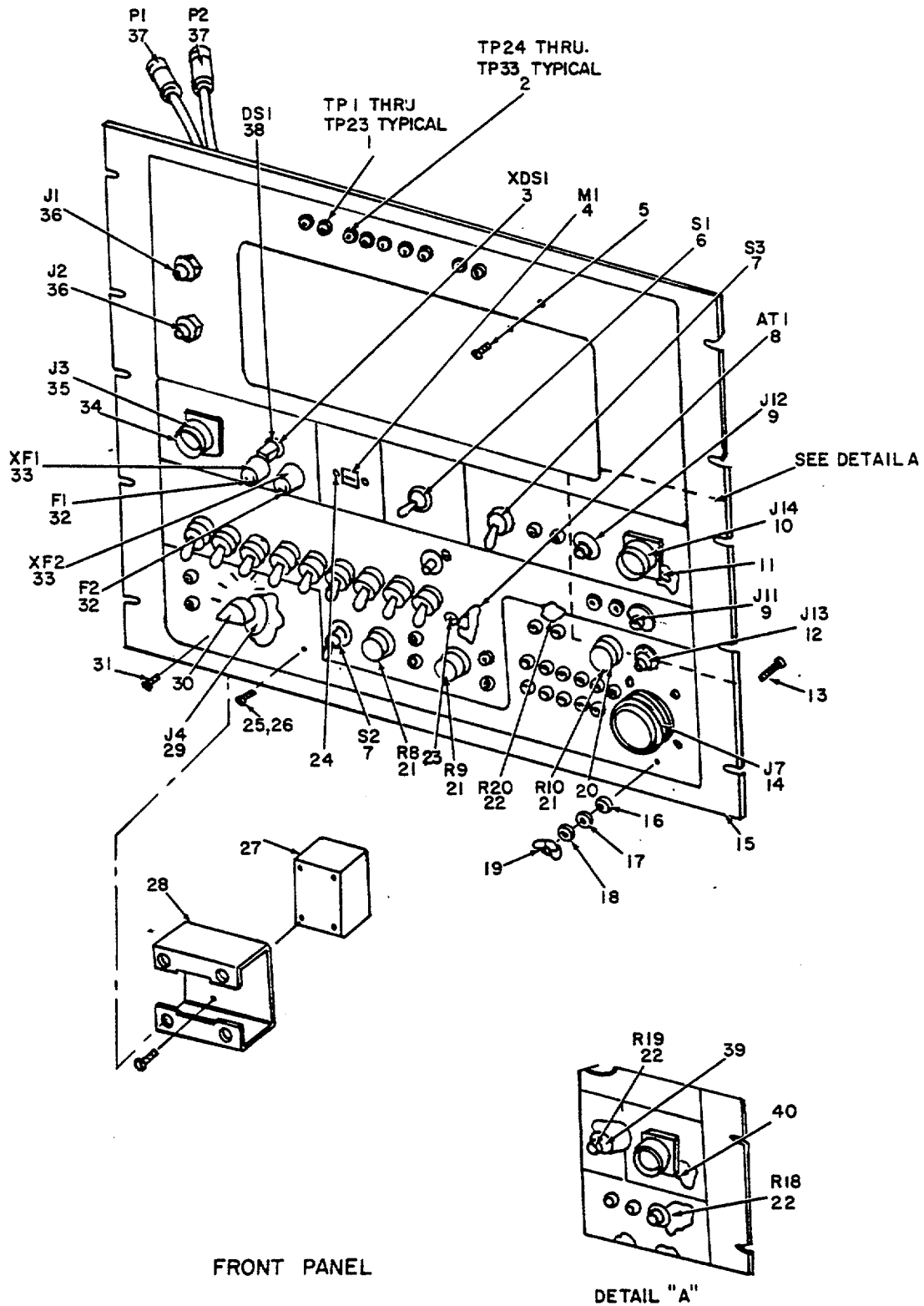
(1) ILLUSTRATION		(2)	(3)	(4)	(5)	(6) DESCRIPTION	(7)	(8)
(a) FIG NO.	(b) ITEM NO.	SMR CODE	NATIONAL STOCK NUMBER	PART NUMBER	FSCM	USABLE ON CODE	U/M	QTY INC IN UNIT
2	1	PAHDL	6625-00-484-5859	CY6789APM	80058	CASE, TEST SET	EA	1
2	2	PADZZ	5340-00-152-0469	ZSP4-4001	19178	HINGE, BUTT	EA	3
2	3	PADZZ	5340-00-992-8139	ZSP2-204	19178	LATCH, SPRING	EA	7
2	4	XDDZZ		ZSP9-9007	19178	LID	EA	1
2	5	XDDZZ		ZSP9-902	19178	CLIP	EA	3
2	6	XDHZZ		10026700-101	94580	PLATE IDENT	EA	2
2	7	PADZZ	4920-00-730-3481	ZSP6-602	19178	VALVE	EA	1
2	8	XDDZZ		1995949-1	94580	PANEL, BLANK	EA	1
2	9	XDDZZ		NAS163-08-10	80205	SCREW, MACHINE	EA	10
2	10	XDDZZ		1199598-1	94580	SPACER ASSY	EA	1
2	11	XDDZZ		1995938-801	94580	SPACER	EA	1
2	12	XDDZZ		F22UNC4-82	72962	NUT, SELF-LOCKING	EA	10
2	13	XDDZZ		NAS1635-3-10	80205	SCREW, MACHINE	EA	17
2	14	XDDZZ		1996506-1	94580	SPACER	EA	1
2	15	XDDZZ		ZSP7-701	19178	BUMPER, LUGGAGE	EA	6
2	16	XDDZZ		ZSP3-3001	19178	HANDLE	EA	2
2	17	XDHZZ		1995986-805	94580	TAG, IDENTIFICATION	EA	1
2	18	PAHZZ	5905-00-901-1583	RN60C60R4F	81349	RESISTOR, FXD, FILM	EA	1
2	19	XDHZZ		10022273-101	94580	TUBE	EA	1
2	20	XDHZZ		10022242-101	94580	COUPLING	EA	2
2	21	XDHZZ		1995986-803	94580	TAG IDENTIFICATION	EA	1
2	22	PAHZZ	5935-00-426-5951	50-328-3188	98291	CONNECTOR, PLUG, ELEC	EA	1
2	23	XDHZZ		1996499-1	94580	FERRULE	EA	1
2	24	PAHZZ	5905-00-882-7889	RN60D3R2F	81349	RESISTOR, FXD, FILM	EA	1
2	25	PAHZZ	5905-00-763-9309	RN60039R2F	81349	RESISTOR, FXD, FILM	EA	1
2	26	PAHZZ	5940-00-502-7688	GSC149	59730	FERRULE	EA	1
2	27	XDHZZ		NAS139TK3N	80205	CLAMP, LOOP	EA	1
2	28	PAHZZ	5305-00-458-2832	NAS1635-06-6	80205	SCREW, MACHINE	EA	2
2	29	PAHZZ	5310-00-917-6105	F22NKH162	72962	NUT, SELF-LOCKING	EA	2
2	30	PAHZZ	5935-00-850-9157	UG260FU	80058	CONNECTOR, PLUG, ELEC	EA	1
2	31	XDHZZ		1995986-80	94580	TAG, IDENTIFICATION	EA	1
2	32	PAHZZ	5940-00-557-1631	MS25036-LS	96906	TERMINAL, PLUG	EA	2
2	33	XDHZZ		10022504-803	94580	TAG, IDENTIFICATION	EA	1
2	34	XDHZZ		NAS1397K8N	80205	CLAMP	EA	1
2	35	PAHZZ	5305-00-458-2832	NA51635-06-6	80205	SCREW, MACHINE	EA	2
2	36	PAHZZ	5310-00-917-6105	F22NKH62	72962	NUT, SELF-LOCKING	EA	2
2	37	PAHZZ	5310-00-208-4271	F22NKM40	72962	NUT, SELF-LOCKING	EA	11
2	38	PAHZZ	5305-00-239-9314	NAS1635-4-16	80205	SCREW, MACHINE	EA	2
2	39	XDHZZ		1995977-1	94580	LATCH	EA	1
2	40	XDHZZ		NAS1407C3M3	80205	PIN, SPRING	EA	2



## SECTION II

TM 11-6625-1795-40P

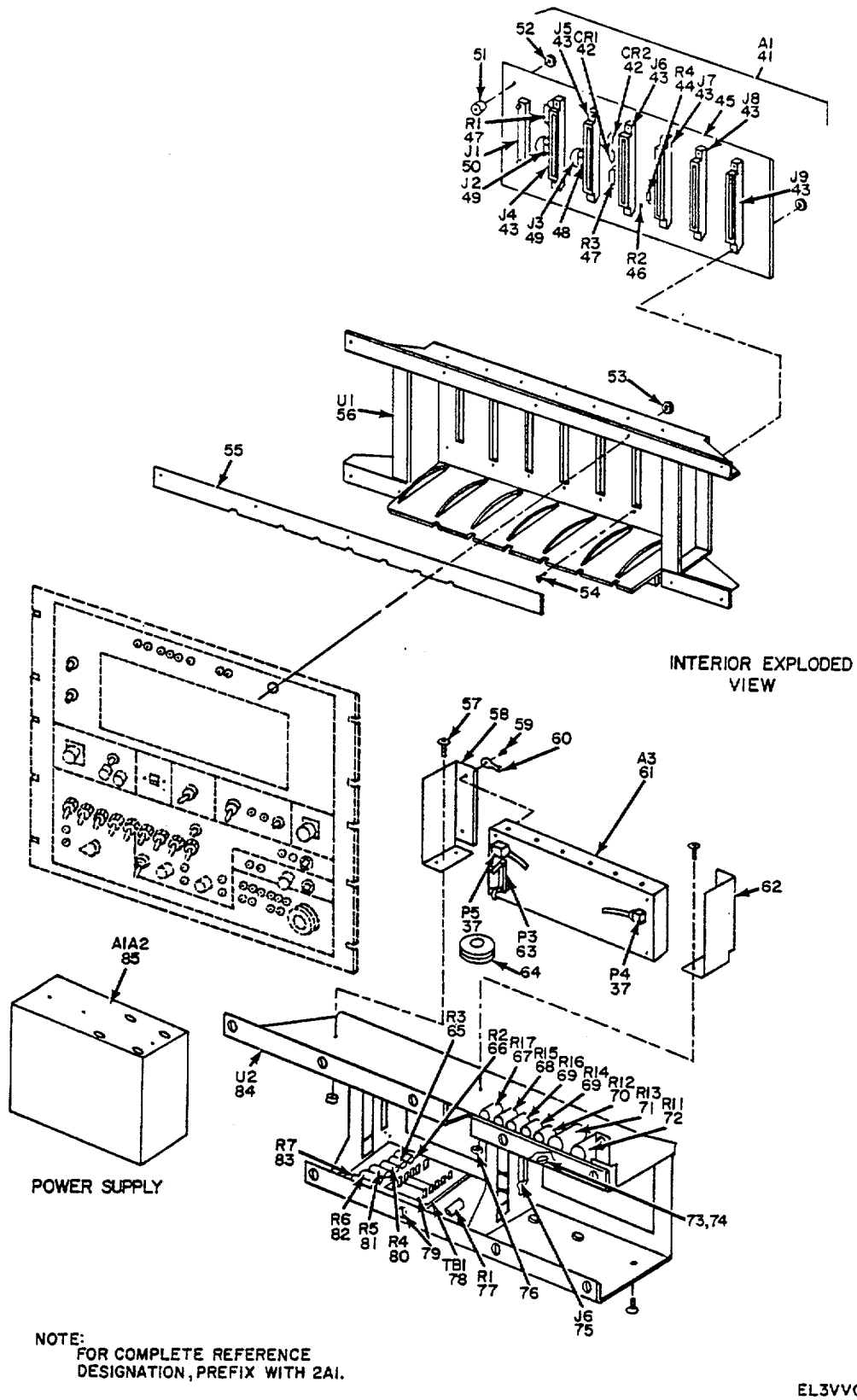
(1) ILLUSTRATION		(2)	(3)	(4)	(5)	(6) DESCRIPTION	(7)	(8)
(a) FIG NO.	(b) ITEM NO.	SMR CODE	NATIONAL STOCK NUMBER	PART NUMBER	FSCM	USABLE ON CODE	U/M	QTY INC IN UNIT
2	41	XDHZZ		MS24585C5	96906	SPRING	EA	1
2	42	XDHZZ		NASL63-04-7	80205	SCREW, MACHINE	EA	4
2	43	XDHZZ		1996510-L	94580	STIFFENER	EA	2
2	44	XDHZZ		1995975-1	94580	GUIDE	EA	1
2	45	XDHZZ		NAS1635-04-6	80205	SCREW, MACHINE	EA	5
2	46	XDHZZ		1996509-801	94580	SPACER	EA	1
2	47	XDHZZ		1996515-1	94580	CONNECTOR, RCPT, ELEC	EA	1
2	48	PAHZZ	5935-00-978-9434	3388-1-03	71279	JACK, TEST	EA	27
2	49	XDHZZ		1996508-3	94580	BOARD, PW	EA	1
2	50	XDHZZ		1995939-1	94580	BRACKET, ANGLE	EA	2
2	51	XDHZZ		437104-18	94580	RIVET, TUBULAR	EA	4
2	52	XDHZZ		940242	94580	GUIDE, PRINTED CKT	EA	2
2	53	XDHZZ		1995939-801	94580	BRACKET	EA	2
2	54	PAHZZ	5365-00-978-5317	NAS43000-8	80205	SPACER	EA	13
2	55	PAHZZ	5305-00-197-8987	NAS1635-04-8	80205	SCREW, MACHINE	EA	4
2	56	XDHZZ		1995989-805	94580	TAG, IDENTIFICATION	EA	1
2	57	XDHZZ		1995989-803	94580	TAG, IDENTIFICATION	EA	1
2	58	XDHZZ		31-31S	74868	CONNECTOR, PLUG, ELEC	EA	1
2	59	XDHZZ		NAS139TK3N	80205	CLAMP, LOOP	EA	3
2	60	PAHZZ	5305-00-458-2832	NAS1635-06-6	80205	SCREW, MACHINE	EA	3
2	61	PAHZZ	5310-00-917-6105	F22NKM62	72962	NUT, SELF-LOCKING	EA	3
2	62	PAHZZ	5935-00-518-9548	27-7	02660	CONNECTOR, PLUG, ELEC	EA	1
2	63	XDHZZ		1995989-801	94580	TAG, IDENTIFICATION	EA	1
2	64	XDHZZ		N23329-3-07	96906	CONNECTOR, PLUG, ELEC	EA	1
2	65	XDHZZ		1995984-803	94580	TAG, IDENTIFICATION	EA	1
2	66	PAHZZ	5935-00-573-5709	27-19	02660	CONNECTOR, PLUG, ELEC	EA	1
2	67	XDHZZ		NASL397K3N	80205	CLAMP, LOOP	EA	1
2	68	PAHZZ	5305-00-458-2832	NAS1635-06-6	80205	SCREW, MACHINE	EA	2
2	69	PAHZZ	5310-00-917-6105	F22NKM62	72962	NUT, SELF-LOCKING	EA	2
2	70	XDHZZ		10022147-803	94580	TAG, IDENTIFICATION	EA	1
2	71	XDHZZ		50-075-0701	98291	ADAPTER, CONNECTOR	EA	1
2	72	PAHZZ	5975-00-784-4591	TY15	59730	STRAP, CABLE	EA	1
2	73	PAHZZ	5310-00-917-6105	F22NKM62	72962	NUT, SELF-LOCKING	EA	2
2	74	PAHZZ	5305-00-458-2832	NAS1635-06-6	80205	SCREW, MACHINE	EA	2



NOTE: FOR COMPLETE REFERENCE DESIGNATION  
PREFIX WITH 2A1.

EL3VV003

Figure 3. Test Set, Radar Altimeter Module (2A1) (Sheet 1 of 2).



EL3VV004

Figure 3. Test Set, Radar Altimeter Module (2A1) (Sheet 2 of 2).

## SECTION II

TM 11-6625-1795-40P

(1) ILLUSTRATION		(2)	(3)	(4)	(5)	(6)	(7)	(8)
(a) FIG NO.	(b) ITEM NO.	SMR CODE	NATIONAL STOCK NUMBER	PART NUMBER	FSCM	DESCRIPTION  USABLE ON CODE	U/M	QTY INC IN UNIT
						GROUP 01 TEST SET, RADAR ALTIMETER MODULE 2A1		
3	1	PADZZ	5935-00-578-3489	MS16108-2A	96906	JACK, TEST	EA	23
3	2	PADZZ	5935-00-577-2336	MS16108-3A	96906	JACK, TEST	EA	10
3	3	PAOZZ	6210-00-808-8604	MS25257-4	96906	INDICATOR LIGHTASSY	EA	1
3	4	PADZZ	6645-00-988-4426	MS17322-6	96906	METER	EA	1
3	5	XDDZZ		NAS1635-08-10P	80205	SCREW, MACHINE	EA	22
3	6	PAOZZ	5930-00-611-9376	MS35059-21	96906	SWITCH	EA	1
3	7	PADZZ	5930-00-655-1514	MS35058-22	96906	SWITCH	EA	2
3	8	XDDZZ		1996483-1	94580	ATTENUATOR, STEPVAR	EA	1
3	9	XDDZZ		10023241-101	94580	CONNECTOR, RCPT, ELEC	EA	2
3	10	PADZZ	5935-00-825-8862	MS3112E14-19S	96906	CONNECTOR, RCPT, ELEC	EA	1
3	11	XDDZZ		25005-000	78189	TERMINAL, LUG	EA	1
3	12	PAOZZ	5935-00-780-8562	31-318	74868	JACK, BULKHEAD COAX	EA	1
3	13	PADZZ	5305-00-088-9671	MS24693C52	96906	SCREW MACHINE	EA	1
3	14	PAOZZ	5935-00-686-0271	MS3102R22-14SC	96906	CONNECTOR, RCPT, ELEC	EA	1
3	15	XDDZZ		1995944-1	94580	PANEL, MACHINED	EA	1
3	16	PADZZ	5310-00-045-3299	MS35338-42	96906	WASHER, LOCK	EA	1
3	17	PADZZ	5310-00-837-1381	NAS671C8	80205	NUT, PLAIN, HEXAGON	EA	1
3	18	PADZZ	5310-00-722-5998	MS15795-807	96906	WASHER, FLAT	EA	1
3	19	PADZZ	5310-00-720-7798	MS35425-19	96906	NUT, WING	EA	1
3	20	PAOZZ	5355-00-685-4688	MS91528-101B	96906	KNOB	EA	3
3	21	PADZZ	5905-00-577-1761	RV6NAYS0102A	81349	RESISTOR VARIABLE	EA	3
3	22	PADZZ	5905-00-683-2233	RC07GF910J	81349	RESISTOR, FXD, CMPSN	EA	3
3	23	XDDZZ		NAS1635-08-6P	80205	SCREW, MACHINE	EA	4
3	24	XDDZZ		NAS1635-04-6P	80205	SCREW, MACHINE	EA	2
3	25	XDDZZ		NAS388-10-10P	80205	SCREW, MACHINE	EA	10
3	26	XODZZ		NAS391B10P	80205	WASHER	EA	10
3	27	XDDZZ		10022268-101	94580	TRANSFORMER	EA	1
3	28	XDDZZ		10022289-101	94580	BRACKET ANGLE	EA	1
3	29	XDDZZ		10022272-101	94580	SWITCH, ROTARY	EA	1
3	30	PAOZZ	5355-00-556-0145	MS91528-1K2	96906	KNOB	EA	1
3	31	XDDZZ		NAS1635-06-7P	80205	SCREW, MACHINE	EA,	4
3	32	XDDZZ	5920-00-835-3031	MS3112E16-26P	96906	FUSE, CARTRIDGE	EA	2
3	33	PADZZ	5920-00-892-9311	FHN26G1	81349	FUSEHOLDER	EA	2'
3	34	XDDZZ		NS1635-04-8P	80205	SCREW, MACHINE	EA	12
3	35	PADZZ	5935-00-835-3031	MS3112E16-26P	96906	CONNECTOR, RCPT, ELEC	EA	1
3	36	XDDZZ		M23329-3-21	96906	CONNECTOR, RCPT, ELEC	EA	2
3	37	PADZZ	5935-00-123-5297	50-12-0029	98291	CONNECTOR, RCPL, ELEC	EA	3
3	38	PAOZZ	6240-00-892-4420	MS2525NE2D	96906	LAMP	EA	1

## SECTION II

TM 11-6625-1795-40P

(1) ILLUSTRATION		(2)	(3)	(4)	(5)	(6) DESCRIPTION	(7)	(8)
(a) FIG NO.	(b) ITEM NO.	SMR CODE	NATIONAL STOCK NUMBER	PART NUMBER	FSCM	USABLE ON CODE	U/M	QTY INC IN UNIT
3	39	PADZZ	5940-00-500-7227	31-759	02660	TERMINAL, LUG	EA	2
3	40	PAOZZ	5940-00-812-2903	YE1620	09922	ADAPTER, SOLDER, CUP	EA	1
3	41	PADDD	6625-00-179-4820	1995943-L	94580	CIRCUIT CARD ASSY	EA	1
3	42	PADZZ	5961-00-646-4611	JAN1N457	81350	SEMICONDUCTOR, DIODE	EA	2
3	43	PADZZ	5935-00-065-6884	960140-1	94580	CONNECTOR, RCPT, ELEC	EA	6
3	44	PADZZ	5905-00-279-1890	RC20GF391J	81349	RESISTOR, FXD, CMPSN	EA	1
3	45	XDDZZ		1995942-1	94580	BOARD, PW	EA	1
3	46	PADZZ	590-00-686-31281	RC07GF113J	81549	RESISTOR, FXD, CMPSN	EA	1
3	47	PAOZZ	5905-00-247-8732	RCR32G471J	81349	RESISTOR, FXD, CMPSN	EA	2
3	48	XDDZZ		440890	94580	WASHER	EA	2
3	49	PAOZZ	5935-00-078-0631	956L10-L	94580	CONNECTOR, RCPT, ELEC	EA	2
3	50	PADZZ	5935-00-069-7084	960161-4	94580	CONNECTOR, SET, ELEC	EA	1
3	51	PADZZ	5365-00-632-3102	NAS43DD0-16	80205	SPACER	EA	2
3	52	XDDZZ		F22NM40	72962	NUT, SELF-LOCKING	EA	14
3	53	XDDZZ		F22NM82	72962	NUT, SELF-LOCKING	EA	12
3	54	XDDZZ		NAS1635-04-10P	80205	SCREW, MACHINE	EA	14
3	55	XDDZZ		1996511-1	94580	PLATE, LATCH	EA	1
3	56	XDDZZ		1995946-1	94580	CHASSIS, EQPT, ELEC	EA	1
3	57	PAOZZ	5305-00-458-2832	NAS1635-06-6	80205	SCREW, MACHINE	EA	2
3	58	XDDZZ		1995947-1	94580	BRACKET, ANGLE	EA	1
3	59	PADZZ	5305-00-409-2155	NS1635-06-16	80205	SCREW, MACHINE	EA	4
3	60	XDDZZ		2441	71785	TERMINAL, LUG	EA	1
3	61	PAHDD	5841-00-045-6974	962568-1	94580	AMPLIFIER, IF	EA	1
3	62	XDDZZ		1995947-2	94580	BRACKET, ANGLE	EA	1
3	63	PADZZ	5935-00-426-5951	50-328-3188	98291	CONNECTOR, PLUG, ELEC	EA	1
3	64	XDDZZ		MS35489-46	96906	GROMMET	EA	1
3	65	PADZZ	5905-00-102-5823	RE60G5360	81349	RESISTOR, FXD, WW	EA	1
3	66	PADZZ	5905-00-931-7590	RE60G2491	81349	RESISTOR, FXD, WW	EA	1
3	67	PADZZ	5905-00-843-6409	RE65G6340	81349	RESISTOR, FXD, WW	EA	1
3	68	PADZZ	5905-00-892-6323	RE65G7R15	81349	RESISTOR, FXD, WW	EA	1
3	69	PADZZ	5905-00-306-1543	RE65G63R4	81349	RESISTOR, FXD, WW	EA	2
3	70	PADZZ	5905-00-813-6230	RE65G1401	81349	RESISTOR, FXD, WW	EA	1'
3	71	PADZZ	5905-00-883-0915	RE70G80R6	81349	RESISTOR, FXD, WW	EA	1
3	72	PAOZZ	3905-00-843-2617	RE70G2001	81349	RESISTOR, FXD, WW	EA	1
3	73	XDDZZ		NAS1635-02-6	80205	SCREW, MACHINE	EA	24
3	74	PADZZ	5310-00-595-7468	F22NM26	72962	NUT, SELF-LOCKING	EA	24
3	75	PADZZ	5935-00-921-6140	225-21821-201	02660	CONNECTOR, RCPT, ELEC	EA	1
3	76	PADZZ	5310-00-081-8087	F22NM62	72962	NUT, SELF-LOCKING	EA	2
3	77	PADZZ	5905-00-060-6329	RE65G5621	81349	RESISTOR, FXD WW	EA	1
3	78	XDDZZ		ES3330-5-1	71279	TERMINAL BOARD	EA	1

## SECTION II

TM 11-6625-1795-40P

(1) ILLUSTRATION		(2)	(3)	(4)	(5)	(6)	(7)	(8)
(a) FIG NO.	(b) ITEM NO.	SMR CODE	NATIONAL STOCK NUMBER	PART NUMBER	FSCM	DESCRIPTION  USABLE ON CODE	U/M	QTY INC IN UNIT
3	79	XDDZZ		NAS1635-04-10	80205	SCREW, MACHINE	EA	6
3	80	PADZZ	5905-00-814-8155	RE60G5900	81349	RESISTOR, FXD, WW	EA	1
3	81	PADZZ	5905-00-102-5822	RE60G2740	81349	RESISTOR, FXD, WW	EA	1
3	82	XDDZZ		RE60G2151	81349	RESISTOR, FXD, WW	EA	1
3	83	PADZZ	5905-00-102-5820	RE60G18R7	81349	RESISTOR, FXD, WW	EA	1
3	84	XDDZZ		1995945-1	94580	CHASSIS, ELEC, EQPT	EA	1
3	85	XDHDD		962590-3	94580	POWER SPLY SUBASSY	EA	1

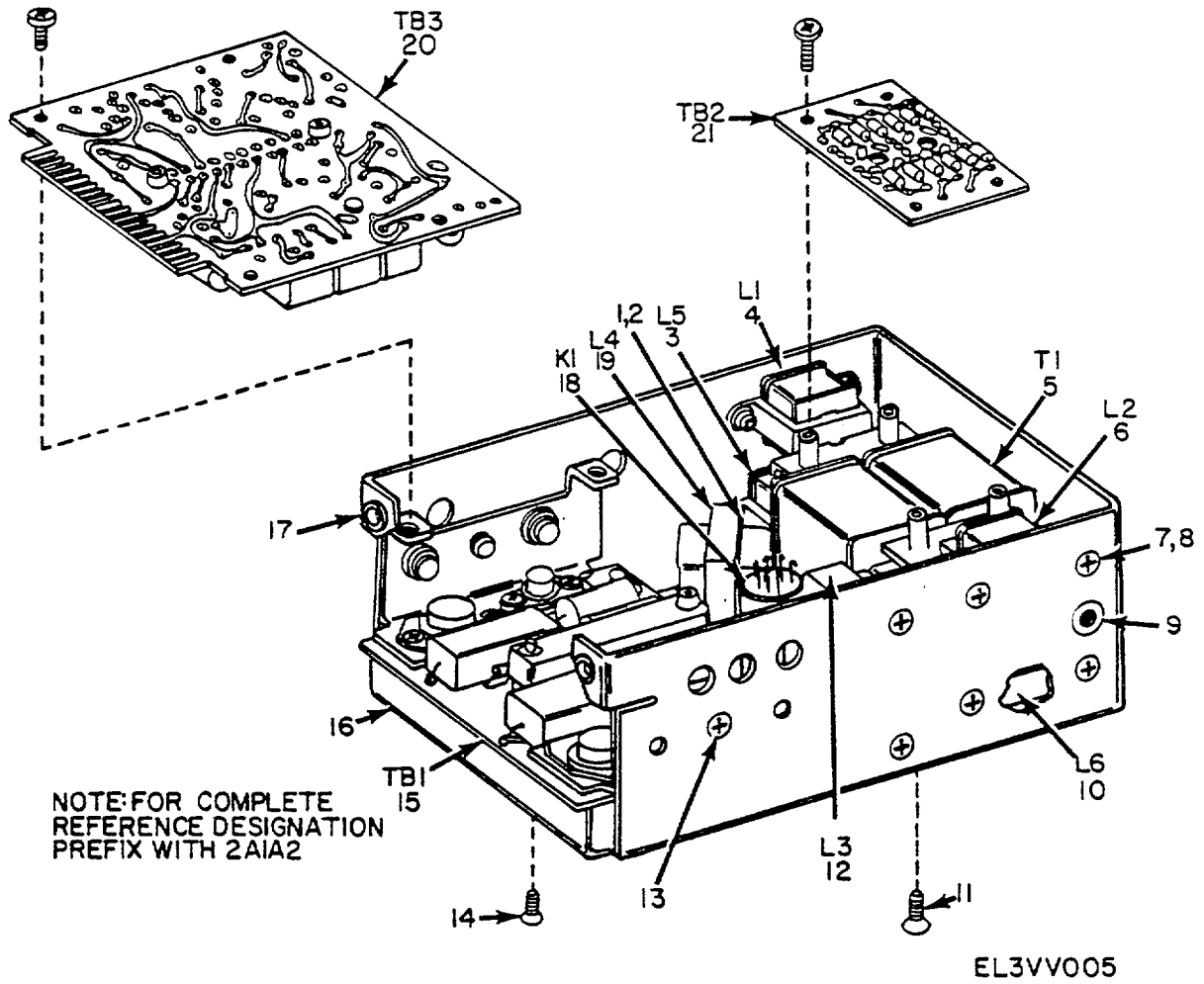


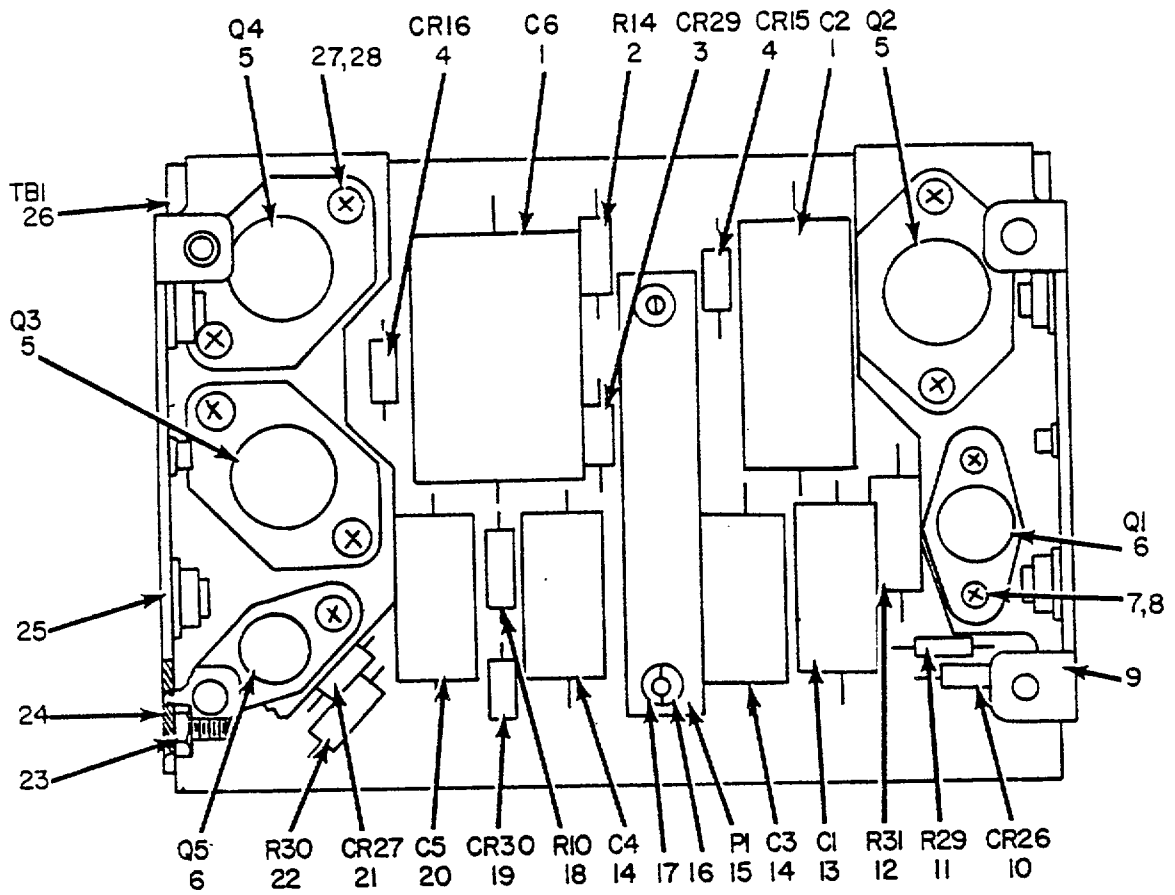
Figure 4. Power Supply Subassembly.

## SECTION II

TM 11-6625-1795-40P

(1) ILLUSTRATION		(2)	(3)	(4)	(5)	(6) DESCRIPTION	(7)	(8)
(a) FIG NO.	(b) ITEM NO.	SMR CODE	NATIONAL STOCK NUMBER	PART NUMBER	FSCM	USABLE ON CODE	U/M	QTY INC IN UNIT
						GROUP 0101 POWER SUPPLY SUBASSEMBLY		
4	1	PADZZ	5305-00-814-1707	NAS662C2R4	80205	SCREW, MACHINE	EA	10
4	2	PADZZ	5310-00-622-1724	68-1660-26	72962	NUT, SELF-LOCKING	EA	14
4	3	PADZZ	5950-00-067-6629	959149-1	94580	REACTOR	EA	1
4	4	PADZZ	5950-00-067-6613	959145-1	94580	REACTOR	EA	1
4	5	XDDZZ		959191-1	94580	TRANSFORMER	EA	1
4	6	PADZZ	5950-00-067-6618	959146-1	94580	REACTOR	EA	1
4	7	XDOZZ		AN507C440R6	88044	SCREW, MACHINE	EA	4
4	8	XDDZZ		F22NM40	72962	NUT, SELF-LOCKING	EA	4
4	9	PADZZ	5310-00-873-3195	LAC632-2	46384	NUT, SELF-LOCKING	EA	4
4	10	PADZZ	5950-00-067-6631	959150-1	94580	REACTOR	EA	1
4	11	XDDZZ		AN507C632R6	88044	SCREW, MACHINE	EA	6
4	12	PADZZ	5950-00-067-6622	959147-1	94580	REACTOR	EA	1
4	13	XDDZZ		473623-4	94580	SCREW, MACHINE	EA	8
4	14	PADZZ	5305-00-993-9189	AN50C44DR4	88044	SCREW, MACHINE	EA	2
4	15	PAHDD	5841-00-179-4360	962370-3	94580	POWER SPLY SUBASSY	EA	1
4	16	XDDZZ		983416-804	94580	CHASSIS	EA	1
4	17	XDDZZ		3875	61957	EYELET	EA	2
4	18	XDDZZ		FR2-120SN0-115	06151	RELAY	EA	1
4	19	PADZZ	5950-00-067-6623	959148-1	94580	REACTOR	EA	1
4	20	PAHDD	5841-00-070-4478	962369-3	94580	POWER SPLY SUBASSY	EA	1
4	21	XDHDD		10022164-101	94580	POWER SPLY SUBASSY	EA	1





NOTE: FOR COMPLETE REFERENCE  
 DESIGNATION PREFIX WITH 2A1A2TBI

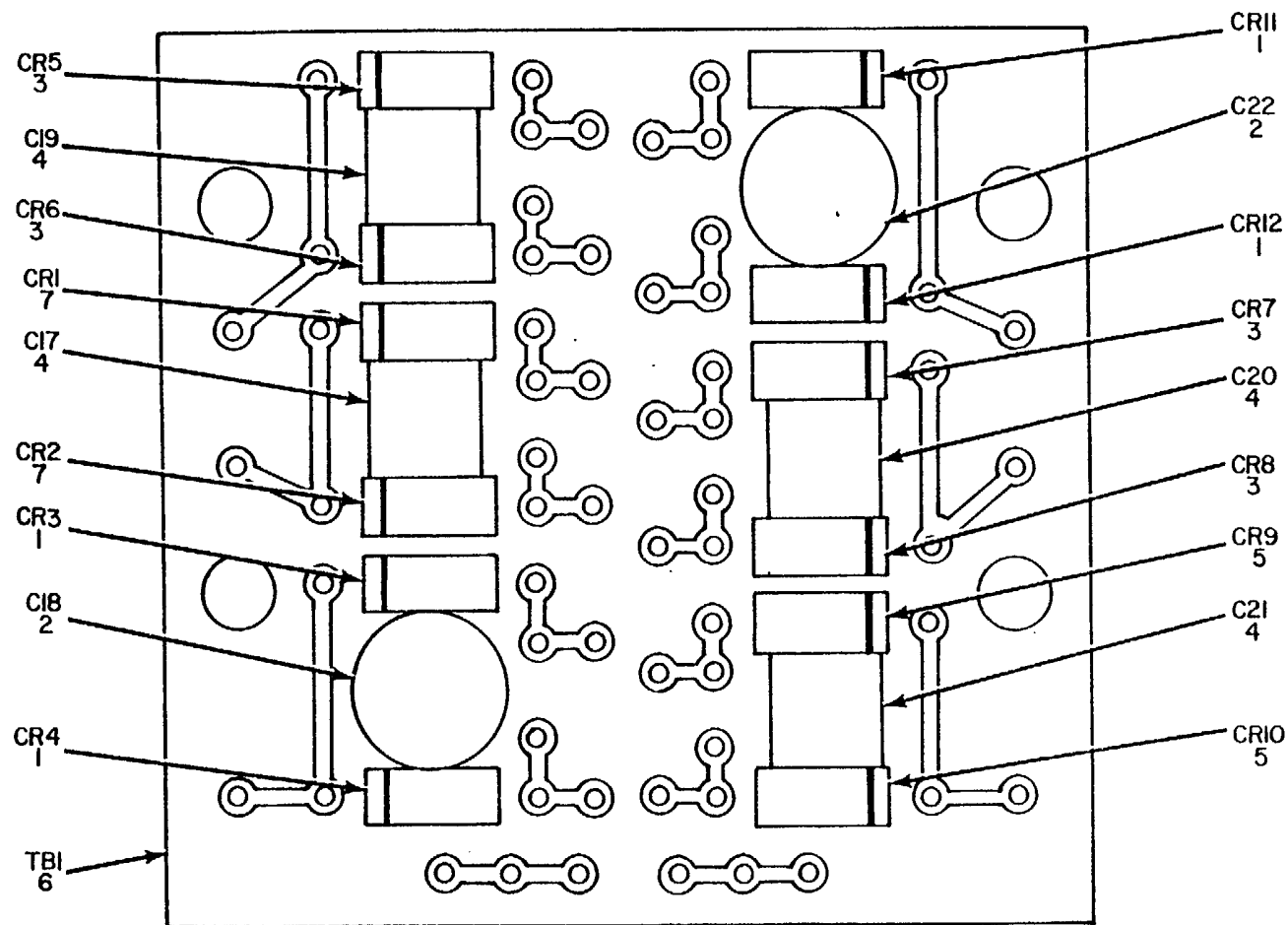
EL3VV006

Figure 5. Power Supply Subassembly No. 1.

## SECTION II

TM 11-6625-1795-40P

(1) ILLUSTRATION		(2)	(3)	(4)	(5)	(6) DESCRIPTION	(7)	(8)
(a) FIG NO.	(b) ITEM NO.	SMR CODE	NATIONAL STOCK NUMBER	PART NUMBER	FSCM	USABLE ON CODE	U/M	QTY INC IN UNIT
						GROUP 010101 POWER SUPPLY SUBASSEMBLY NO 1		
5	1	PADZZ	5910-00-067-6734	WE2-205E	99515	CAPACITOR, FXD, MICA	EA	2
5	2	PADZZ	5905-00-195-5571	RC20GF680J	81349	RESISTOR, FXD, CMPSN	EA	1
5	3	PADZZ	5961-00-068-2000	959525-10	94580	SEMICONDUCTOR, DIODE	EA	1
5	4	PADZZ	5961-00-068-9142	959527-1	94580	SEMICONDUCTOR, DIODE	EA	2
5	5	PADZZ	5961-00-925-5432	959799-1	94580	TRANSISTOR	EA	3
5	6	PADZZ	5961-00-945-4800	959798-2	94580	TRANSISTOR	EA	2
5	7	XDDZZ		431752-6	94580	SCREW, MACHINE	EA	4
5	8	PADZZ	5310-00-622-1724	68-166-26	72962	NUT, SELF-LOCKING	EA	2
5	9	PADZZ	5841-00-823-9201	962365-1	94501	BRACKET	EA	1
5	10	PADZZ	5961-00-985-4484	959526-22	94580	SEMICONDUCTOR, DIODE	EA	1
5	11	PADZZ	5905-00-686-3838	RC07F273J	81349	RESISTOR, FXD, CMPSN	EA	15
5	12	PADZZ	5905-00-931-2360	935707-20R0	94580	RESISTOR, FXD, CMPSN	EA	1
5	13	XDDZZ		479511-38	94580	CAPACITOR, FXD, ELEC	EA	1
5	14	PADZZ	5910-00-064-0836	479511-39	94580	CAPACITOR, ELCTLT	EA	2
5	15	PADZZ	5935-00-068-4213	959431-2	94580	CONNECTOR, ELEC	EA	1
5	16	XDDZZ		983454	94580	NUT	EA	2
5	17	XDDZZ		983455-2	94580	SPACER	EA	2
5	18	PAOZZ	5905-00-195-6800	RC20GF561J	81349	RESISTOR, FXD, CMPSN	EA	1
5	19	PADZZ	5961-00-068-1998	959525-7	94580	SEMICONDUCTOR, DIODE	EA	1
5	20	PADZZ	5910-00-070-2417	471911-40	94580	CAPACITOR, ELCTLT	EA	1
5	21	PADZZ	5961-00-892-0909	959526-20	94580	SEMICONDUCTOR, DIODE	EA	1
5	22	PAOZZ	5905-00-171-1998	RC20GF333J	81349	RESISTOR, FXD, CMPSN	EA	1
5	23	PADZZ	5310-00-614-3500	68-1660-40	72962	NUT, SELF-LOCKING	EA	2
5	24	PADZZ	5940-00-614-0537	MS35431-1	96906	TERMINAL, LUG	EA	1
5	25	PADZZ	5841-00-823-9202	962366-1	94580	BRACKET	EA	1
5	26	XDDZZ		962368-1	94580	BOARD, PC	EA	1
5	27	XDDZZ		962523-1	94580	WASHER, FLAT	EA	6
5	28	PADZZ	5310-00-614-3500	681660-40	72962	NUT, SELF-LOCKING	EA	6



NOTE: FOR COMPLETE REFERENCE DESIGNATION,  
PREFIX WITH 2AIA2TB2.

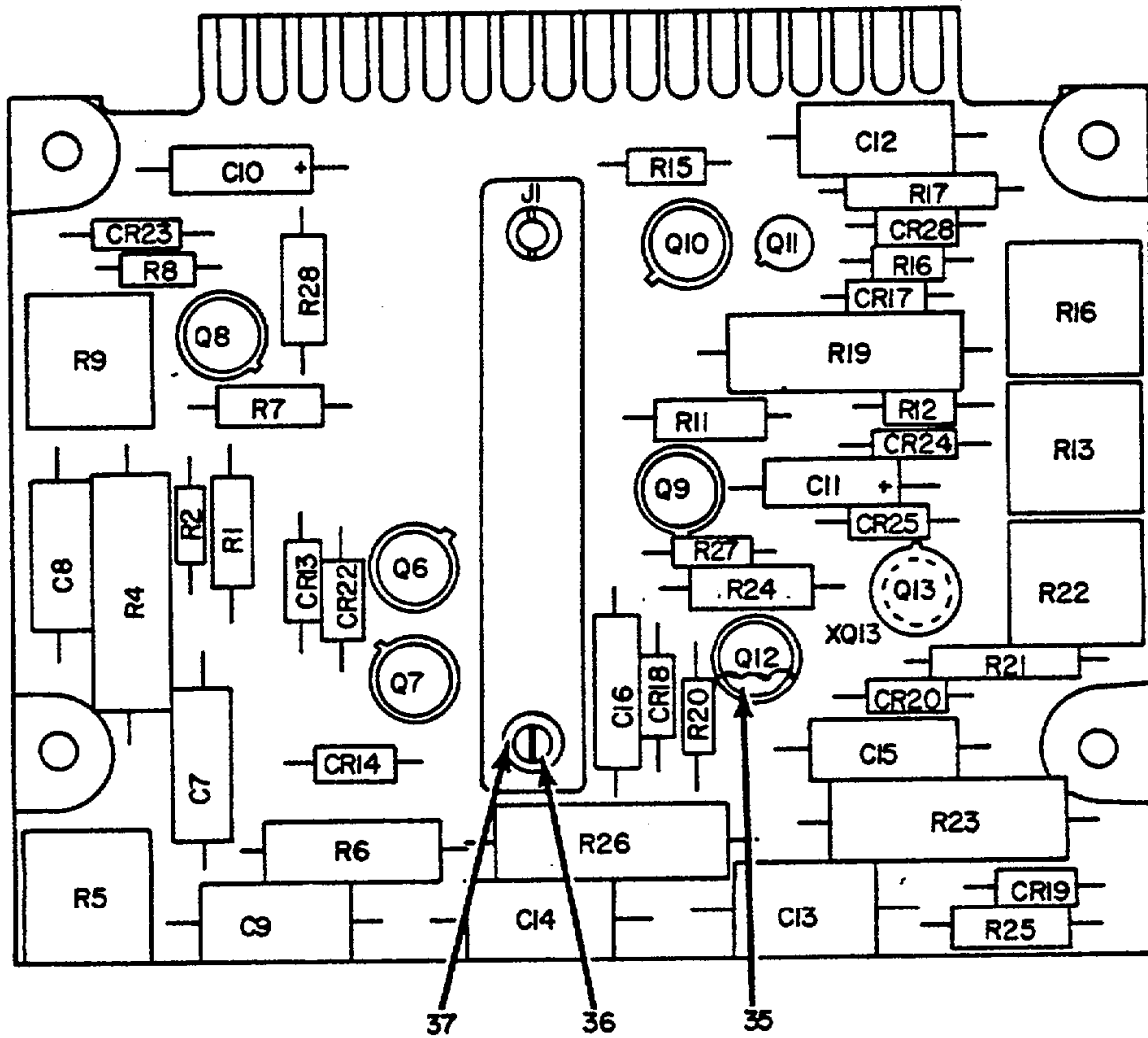
EL3VV007

Figure 6. Power Supply Subassembly No. 2.

SECTION II

TM 11-6625-1795-40P

(1) ILLUSTRATION		(2)	(3)	(4)	(5)	(6) DESCRIPTION	(7)	(8)
(a) FIG NO.	(b) ITEM NO.	SMR CODE	NATIONAL STOCK NUMBER	PART NUMBER	FSCM	USABLE ON CODE	U/M	QTY INC IN UNIT
						GROUP 010102 POWER SUPPLY SUBASSEMBLY NO. 2		
6	1	PADZZ	5961-00-952-6703	1N4385	80131	SEMICONDUCTOR, DIODE	EA	4
6	2	XDDZZ		966531-14	94580	CAPACITOR, FXD, CER	EA	2
6	3	PADZZ	5961-00-105-7731	JAN1N4383	81349	SEMICONDUCTOR, DIODE	EA	4
6	4	PADZZ	5910-00-857-9192	CK06CW103M	81349	CAPACITOR, FXD, CER	EA	4
6	5	PADZZ	5961-00-869-3676	G1008	72699	SEMICONDUCTOR, DIODE	EA	2
6	6	XDDZZ		983451-1	94580	BOARD, PC	EA	1
6	7	PADZZ	5961-00-772-7706	JAN1N4384	81349	SEMICONDUCTOR, DIODE	EA	2



NOTE: FOR COMPLETE REFERENCE  
DESIGNATION PREFIX WITH 2A1A2TB3

EL3VV008

Figure 7. Power Supply Subassembly No. 3 (Sheet 1 of 2).

REF DES.	ITEM NO.	REF DES.	ITEM NO.	REF DES.	ITEM NO
C7	1	CR28	5	R13	20
C8	1	J1	9	R15	21
C9	2	Q6	10	R16	14
C10	3	Q7	10	R17	22
C11	3	Q8	10	R18	23
C12	2	Q9	10	R19	24
C13	2	Q10	10	R20	25
C14	2	Q11	11	R21	26
C15	1	Q12	10	R22	23
C16	4	Q13	12	R23	27
CR13	5	R1	13	R24	28
CR14	5	R2	14	R25	29
CR17	5	R4	15	R26	30
CR18	5	R5	16	R27	31
CR19	5	R6	17	R28	32
CR20	5	R7	18	TBI	33
CR22	6	R8	19	XQ13	34
CR23	7	R9	20		
CR24	7	R11	18		
CR25	8	R12	19		

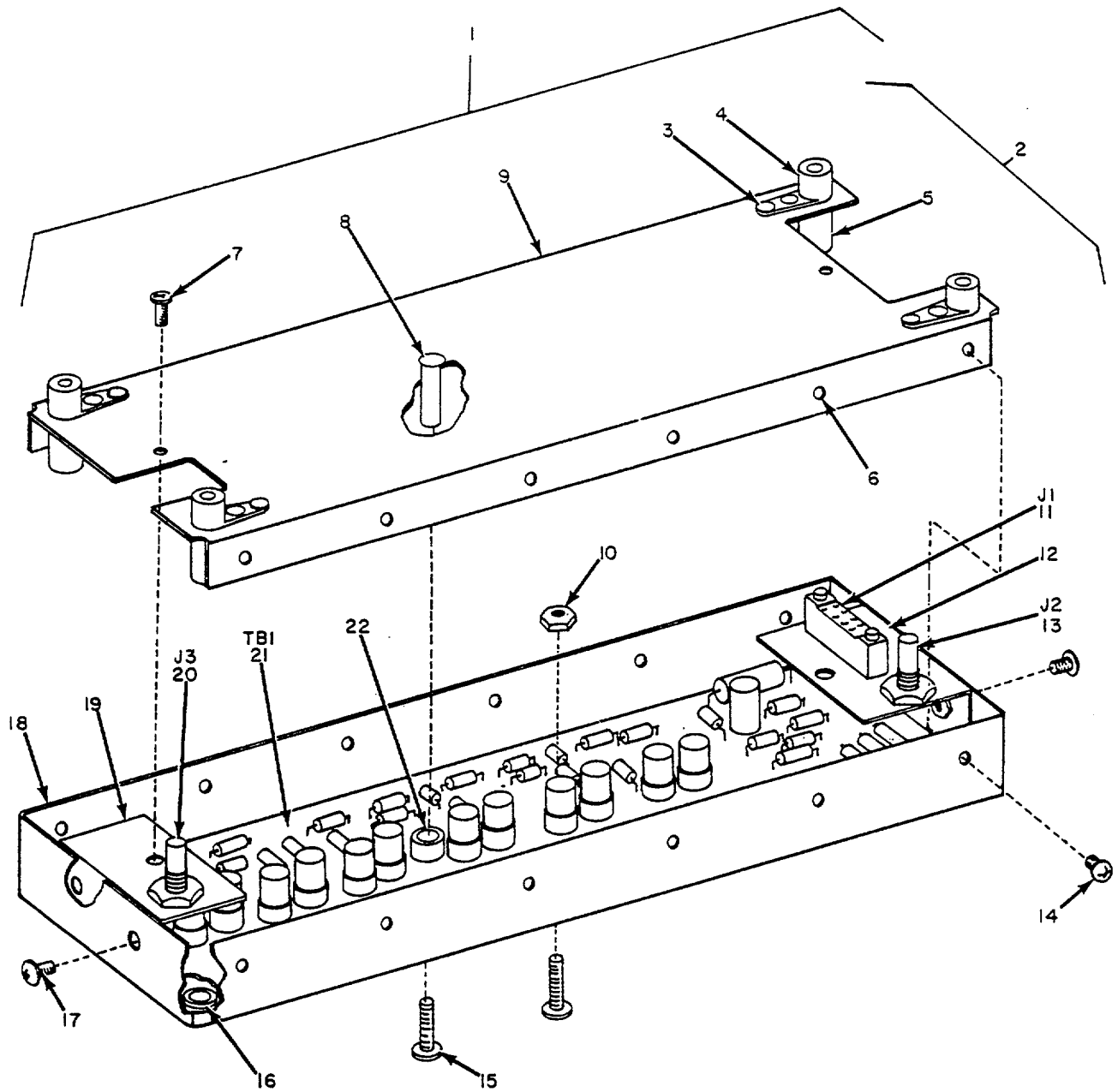
EL3VV009

Figure 7. Power Supply Subassembly No. 3 (Sheet 2 of 2).

## SECTION II

TM 11-6625-1795-40P

(1) ILLUSTRATION		(2)	(3)	(4)	(5)	(6) DESCRIPTION	(7)	(8)
(a) FIG NO.	(b) ITEM NO.	SMR CODE	NATIONAL STOCK NUMBER	PART NUMBER	FSCM	USABLE ON CODE	U/M	QTY INC IN UNIT
						GROUP 010103 POWER SUPPLY SUBASSEMBLY N03		
7	1	PADZZ	5910-00-831-7585	956794-1	94580	CAPACITOR, FXD, PAPER	EA	3
7	2	XDDZZ		956794-3	94580	CAPACITOR, FXD, PAPER	EA	4
7	3	PADZZ	5910-00-064-0840	479511-41	94580	CAPACITOR, ELCTLT	EA	2
7	4	PADZZ	5910-00-068-9093	956794-5	94580	CAPACITOR, FXD, PAPER	EA	1
7	5	PADZZ	5961-00-068-9142	959527-1	94580	SEMICONDUCTOR, DIODE	EA	7
7	6	PADZZ	5961-00-068-9136	959526-16	94580	SEMICONDUCTOR, DIODE	EA	1
7	7	PADZZ	5961-00-068-2008	959525-13	94580	SEMICONDUCTOR, DIODE	EA	2
7	8	PADZZ	5961-00-078-0628	960238-1	94580	SEMICONDUCTOR, DIODE	EA	1
7	9	PADZZ	5935-00-067-6640	959431-1	94580	CONNECTOR, ELEC	EA	1
7	10	PADZZ	5961-00-408-0913	956688-1	94580	TRANSISTOR	EA	6
7	11	PADZZ	5961-00-408-0912	956686-1	94580	TRANSISTOR	EA	1
7	12	PADZZ	5961-00-087-5403	959496-1	94580	TRANSISTOR	EA	1
7	13	PADZZ	5905-00-279-3506	RC20GF332J	81349	RESISTOR, FXD, CMPSN	EA	1
7	14	PADZZ	5905-00-800-0179	RC07GF563J	81349	RESISTOR, FXD, CMPSN	EA	2
7	15	PADZZ	5905-00-681-5978	RN70C2002F	81349	RESISTOR, FXD, FILM	EA	1
7	16	PADZZ	5905-00-070-5928	930940-6	94580	RESISTOR, VARIABLE	EA	1
7	17	PADZZ	5905-00-752-3957	RN6SC1212F	81349	RESISTOR, FXD, FILM	EA	1
7	18	PADZZ	5905-00-279-3513	RC20GF221J	81349	RESISTOR, FXD, CMPSN	EA	2
7	19	PADZZ	5905-00-683-2243	RC07GF151J	81349	RESISTOR, FXD, CMPSN	EA	2
7	20	PADZZ	5905-00-070-5853	930940-4	94580	RESISTOR, VARIABLE	EA	2
7	21	PADZZ	5905-00-686-9998	RC07GF472J	81349	RESISTOR, FXD, CMPSN	EA	1
7	22	PADZZ	5905-00-113-2326	1992555-850s	94580	RESISTOR, FXD, WW	EA	1
7	23	PADZZ	5905-00-070-5945	930-9	94580	RESISTOR, VARIABLE	EA	2
7	24	PADZZ	5905-00-577-9876	RN70C7501F	81349	RESISTOR, FXD, FILM	EA	1
7	25	PADZZ	5905-00-683-2246	RC07GF473J	81349	RESISTOR, FXD, CMPSN	EA	1
7	26	PADZZ	5905-00-108-8432	1992555-9000	94580	RESISTOR, FXD, WW	EA	1
7	27	PADZZ	5905-00-691-0226	RN70C4991F	81349	RESISTOR, FXD, FILM	EA	1
7	28	XDDZZ		RN60C1882F	81349	RESISTOR, FXD, FILM	EA	1
7	29	PADZZ	5905-00-834-6451	RN60C2612F	81349	RESISTOR, FXD, FILM	EA	1
7	30	XDDZZ		RN70C5621J	81349	RESISTOR, FXD, FILM	EA	1
7	31	PADZZ	5905-00-681-6462	RC07GF102J	81349	RESISTOR, FXD, CMPSN	EA	1
7	32	PADZZ	5905-00-195-6800	RC2DGF561J	81349	RESISTOR, FXD, CMPSN	EA	1
7	33	XDDZZ		962367-1	94580	BOARD, PC	EA	1
7	34	PADZZ	5961-00-990-0104	TXBP019-028	98978	CLIP, ELECTRICAL	EA	1
7	35	PADZZ	5970-00-910-9658	88001	17069	PAD	EA	7
7	36	XDDZZ		983455-2	94580	SPACER	EA	2
7	37	XDDZZ		983454-1	94580	NUT, CONNECTOR	EA	2



NOTE:  
FOR COMPLETE REFERENCE DESIGNATION PREFIX WITH 2A1A3.

EL3V010

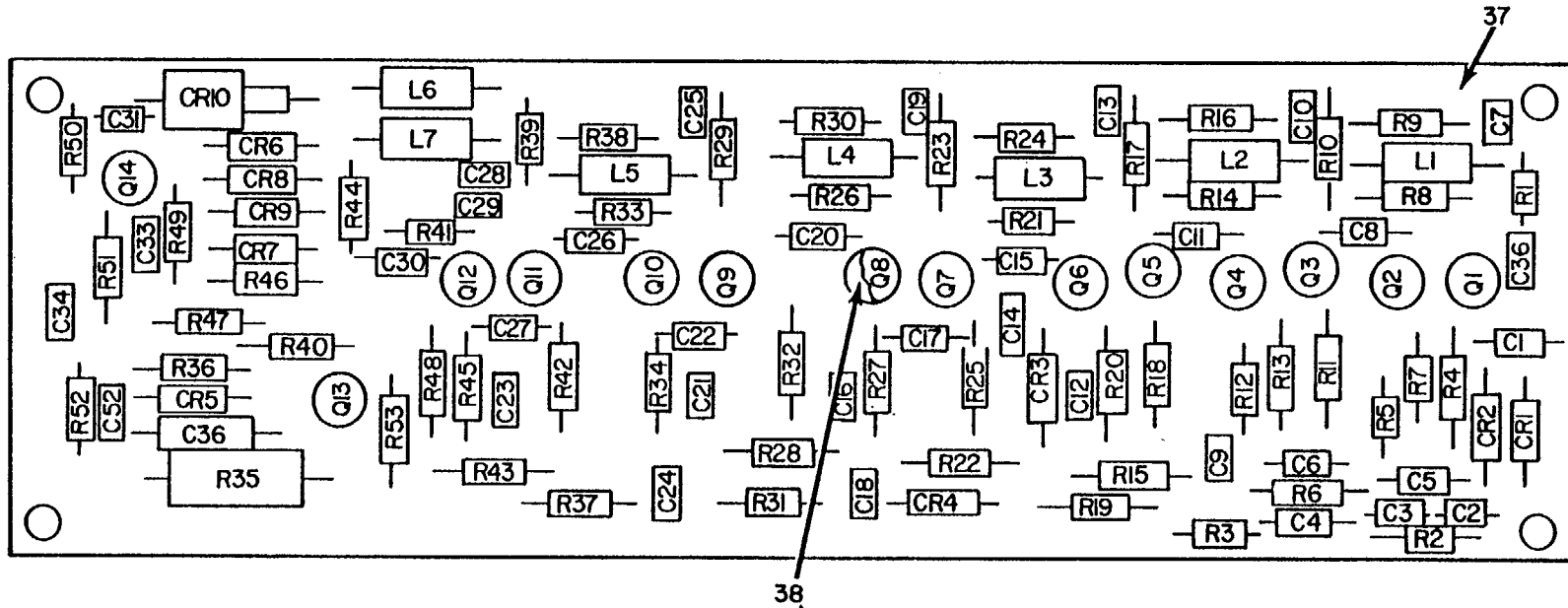
Figure 8. Intermediate Frequency Amplifier.



## SECTION II

TM 11-6625-1795-40P

(1) ILLUSTRATION		(2)	(3)	(4)	(5)	(6) DESCRIPTION	(7)	(8)
(a) FIG NO.	(b) ITEM NO.	SMR CODE	NATIONAL STOCK NUMBER	PART NUMBER	FSCM	USABLE ON CODE	U/M	QTY INC IN UNIT
						GROUP 0102 INTERMEDIATE FREQUENCY AMPLIFIER		
8	1	XDDZZ		962507-1	94580	CAN ASSEMBLY	EA	1
8	2	XDDZZ		962566-1	94580	COVER ASSEMBLY	EA	1
8	3	XDDZZ		437250-3	94580	RIVET	EA	4
8	4	XDDZZ		NAS696C06L-26	96906	NUT, PLATE	EA	4
8	5	PADZZ	5841-00-070-4643	2000495-2	94580	SPACER	EA	4
8	6	PADZZ	5310-00-720-7798	79NCFMA1-26	72962	NUT, CLINCH	EA	12
8	7	XDDZZ		MS35216-3	96906	SCREW, MACHINE	EA	2
8	8	XDDZZ		BSOS440	46384	NUT, SLEEVE	EA	1
8	9	XDDZZ		96256-801	94580	COVER	EA	1
8	10	PADZZ	5310-00-614-3500	68-1660-40	72962	NUT, SELF-LOCKING	EA	11
8	11	XDDZZ		958152-9	94580	CONNECTOR, RCPT, ELEC	EA	1
8	12	XDDZZ		962564-1	94580	BRACKET	EA	1
8	13	PADZZ	5935-00-683-2932	27-21	74868	CONNECTOR, RCPT, ELEC	EA	1
8	14	XDDZZ		MS35216-2	96906	SCREW, MACHINE	EA	12
8	15	XDDZZ		473623-5	94580	SCREW, MACHINE	EA	15
8	16	PADZZ	3120-00-070-4642	2000495-1	94580	SPACER	EA	4
8	17	PADZZ	5305-00-054-5646	MS35216-11	96906	SCREW, MACHINE	EA	4
8	18	XDDZZ		962567-801	94580	CAN	EA	1
8	19	XDDZZ		962565-1	94580	BRACKET	EA	1
8	20	PADZZ	5935-00-655-4168	27-9	74868	CONNECTOR, RCPT, ELEC	EA	1
8	21	XDHDD		962522-1	94580	AMPLIFIER DET ASSY	EA	1
8	22	PADZZ	5841-00-070-4630	97373-1	94580	SPACER	EA	5



NOTE: FOR COMPLETE REFERENCE  
 DESIGNATION PREFIX WITH 2A1A3TB1

EL3VV011

Figure 9. Amplifier Detector Assembly (2A1A3TB1) (Sheet 1 of 2).

REF DES.	ITEM NO.	REF DES.	ITEM NO.	REF DES.	ITEM NO.	REF DES.	ITEM NO.	REF DES.	ITEM NO.	REF DES.	ITEM NO.
C1	1	C21	1	CR5	7	R8	16	R28	22	R48	18
C2	1	C22	3	CR6	6	R9	17	R29	18	R49	19
C3	1	C23	1	CR7	6	R10	18	R30	13	R50	20
C4	1	C24	1	CR1	6	R11	13	R31	23	R51	13
C5	1	C25	1	CR9	6	R12	19	R32	24	R52	32
C6	1	C26	1	CR10	8	R13	13	R33	20	R53	33
C7	1	C27	1	L1	9	R14	20	R34	24	Q1	34
C8	1	C28	1	L2	9	R15	17	R35	25	Q2	34
C9	1	C29	1	L3	9	R16	17	R36	19	03	34
C10	1	C30	1	L4	10	R17	16	R37	26	04	34
C11	1	C31	1	L5	10	R18	13	R38	27	Q5	34
C12	1	C32	1	L6	10	R19	19	R39	19	Q6	34
C13	1	C33	4	L7	10	R20	13	R40	18	Q7	34
C14	2	C34	1	R1	11	R21	20	R41	28	Q8	34
C15	1	C35	1	R2	12	R22	17	R42	29	09	34
C16	1	C36	5	R3	11	R23	20	R43	22	Q10	34
C17	1	CR1	6	R4	13	R24	17	R44	28	Q11	34
C18	1	CR2	6	R5	14	R25	21	R45	29	Q12	34
C19	1	CR3	6	F6	15	R26	20	R46	30	Q13	35
C20	1	CR4	6	R7	13	R27	21	R47	31	Q14	36

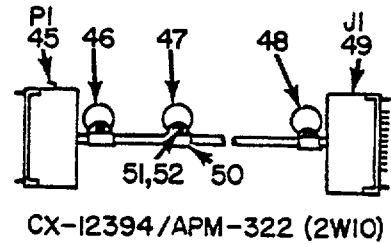
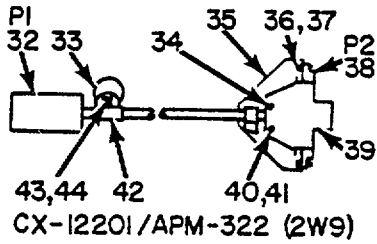
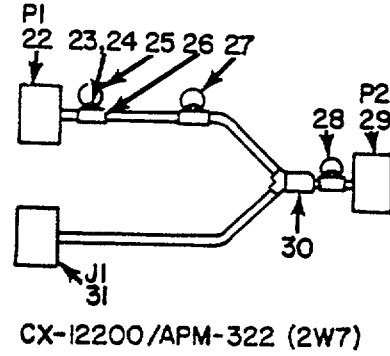
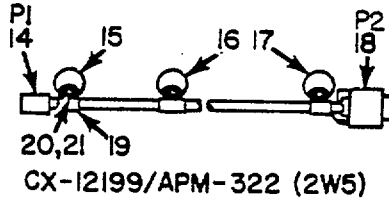
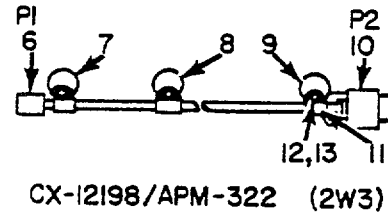
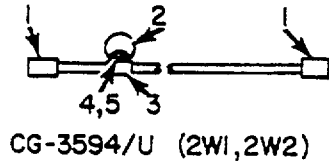
EL3VV012

Figure 9. Amplifier Detector Assembly (2A1A3TB1) (Sheet 2 of 2).

## SECTION II

TM 11-6625-1795-40P

(1) ILLUSTRATION		(2)	(3)	(4)	(5)	(6) DESCRIPTION	(7)	(8)
(a) FIG NO.	(b) ITEM NO.	SMR CODE	NATIONAL STOCK NUMBER	PART NUMBER	FSCM	USABLE ON CODE	U/M	QTY INC IN UNIT
						GROUP 010201 AMPLIFIER DETECTOR ASSEMBLY 2A1A3TB1		
9	1	XDDZZ		984795-1	94580	CAPACITOR, ELCTLT	EA	32
9	2	PADZZ	5910-00-067-6648	955914-8	94580	CAPACITOR, FXD, CER	EA	1
9	3	PADZZ	5910-00-067-9311	942339-62	94580	CAPACITOR, FXD, MICA	EA	1
9	4	PADZZ	5910-00-067-6654	955914-19	94580	CAPACITOR, FXD, CER	EA	1
9	5	PADZZ	5910-00-064-7658	478020-195	94580	CAPACITOR, ELCTLT	EA	1
9	6	PADZZ	5961-00-903-2878	959524-1	94580	SEMICONDUCTOR, DIODE	EA	8
9	7	PADZZ	5961-00-078-0625	959525-9	94580	SEMICONDUCTOR, DIODE	EA	1
9	8	PADZZ	5961-00-078-0630	2000496-3	94580	SEMICONDUCTOR, DIODE	EA	1
9	9	PADZZ	5950-00-233-7322	960059-9	94580	COIL, RF	EA	3
9	10	PADZZ	5950-00-925-5249	960059-7	94580	COIL, RF	EA	4
9	11	PADZZ	5905-00-727-5324	RL075471J	81349	RESISTOR, FXD, FILM	EA	2
9	12	PADZZ	5905-00-458-9267	RLR07C221GR	81349	RESISTOR, FXD, FILM	EA	1
9	13	PADZZ	5905-00-817-7971	RC07GF100J	81349	RESISTOR, FXD, CMPSN	EA	8
9	14	PADZZ	5905-00-727-5352	RL07S182J	81349	RESISTOR, FXD, FILM	EA	1
9	15	PADZZ	5905-00-730-1490	RL07S512J	81349	RESISTOR, FXD, FILM	EA	1
9	16	PADZZ	5905-00-727-5328	RL07S681J	81349	RESISTOR, FXD, FILM	EA	2
9	17	PADZZ	5905-00-450-8530	RLR07C151GR	81349	RESISTOR, FXD, FILM	EA	5
9	18	PADZZ	5905-00-727-5325	RLC07511J	81349	RESISTOR, FXD, FILM	EA	4
9	19	PADZZ	5905-00-727-5341	RL07S102J	81349	RESISTOR, FXD, FILM	EA	5
9	20	XDDZZ		RL07S331J	81349	RESISTOR, FXD, FILM	EA	6
9	21	PADZZ	5905-00-491-2638	RLR07C272GR	81349	RESISTOR, FXD, FILM	EA	2
9	22	PADZZ	5905-00-458-9263	RLR07C101GR	81349	RESISTOR, FXD, FILM	EA	2
9	23	PADZZ	5905-00-184-7705	RLR07C222GR	81349	RESISTOR, FXD, FILM	EA	1
9	24	PADZZ	5905-00-768-3659	RL07S302J	81349	RESISTOR, FXD, FILM	EA	2
9	25	PADZZ	5905-00-913-5016	RL32S152J	81349	RESISTOR, FXD, FILM	EA	1
9	26	PADZZ	5905-00-730-1495	RL07S822J	81349	RESISTOR, FXD, FILM	EA	10
9	27	XDDZZ		RL07S750J	81349	RESISTOR, FXD, FILM	EA	1
9	28	PADZZ	5905-00-727-5318	RL07S271J	81349	RESISTOR, FXD, FILM	EA	2
9	29	PADZZ	5905-00-728-6644	RL07S242J	81349	RESISTOR, FXD, FILM	EA	2
9	30	PADZZ	5905-00-767-2418	RL075562J	81349	RESISTOR, FXD, FILM	EA	1
9	31	PADZZ	5905-00-730-1496	RL075912J	81349	RESISTOR, FXD, FILM	EA	1
9	32	PADZZ	5905-00-730-1489	RL07S472J	81349	RESISTOR, FXD, FILM	EA	1
9	33	PADZZ	5905-00-990-4530	RL07S201J	81349	RESISTOR, FXD, FILM	EA	1
9	34	PADZZ	5961-00-905-4815	956684-1	94580	TRANSISTOR	EA	12
9	35	PADZZ	5961-00-925-5442	959494-1	94580	TRANSISTOR	EA	1
9	36	PADZZ	5961-00-068-9152	959492-1	94580	TRANSISTOR	EA	1
9	37	XDDZZ		962521-1	94580	BOARD, PC	EA	1
9	38	PADZZ	5970-00-910-9683	88001	17069	PAD	EA	21



EL3VV013

Figure 10. Cable Assemblies CG-3594/U (2W1, 2W2), CX-12198/APM-322, CX-12199/APM-322 (2W5), CX-12200/APM-322 (2W7), CX-12201/APM-322 (2W9), and CX-12364/APM-322 (2W10).

## SECTION II

TM 11-6625-1795-40P

(1) ILLUSTRATION		(2)	(3)	(4)	(5)	(6)	(7)	(8)
(a) FIG NO.	(b) ITEM NO.	SMR CODE	NATIONAL STOCK NUMBER	PART NUMBER	FSCM	DESCRIPTION  USABLE ON CODE	U/M	QTY INC IN UNIT
						GROUP 02 CG-3594/U 2W1, 2W2		
10	1	XDHZZ		MS23329-3-05	96906	CONNECTOR, PLUG, ELEC .....	EA	2
10	2	XDHZZ		1995982-803	94580	TAG, IDENTIFICATION.....	EA	1
10	3	XDHZZ		NAS1397K3N	80205	CLAMP, LOOP .....	EA	1
10	4	PAHZZ	5305-00-458-2832	NAS1635-06-6	80205	SCREW, MACHINE.....	EA	2
10	5	PAHZZ	5310-00-917-6105	F22NKM62	72962	NUT, SELF-LOCKING.....	EA	1
						GROUP 03 CX-12198/APM-322		
10	6	PAHZZ	5935-00-779-8294	MS3116F14-19P	96906	CONNECTOR, PLUG, ELEC .....	EA	1
10	7	XDHZZ		1995983-801	94580	TAG, IDENTIFICATION.....	EA	1
10	8	XDHZZ		1995983-807	94580	TAG, IDENTIFICATION.....	EA	1
10	9	XDHZZ		1995983-803	94580	TAG, IDENTIFICATION.....	EA	1
10	10	PAHZZ	5935-00-067-6636	958152-10	94580	CONNECTOR-PLUG, ELEC .....	EA	1
10	11	XDHZZ		NAS1397K32	80205	CLAMP, LOOP .....	EA	3
10	12	PAHZZ	5305-00-458-2632	NAS1635-06-6	80205	SCREW, MACHINE.....	EA	3
10	13	PAHZZ	5310-00-917-6105	F22NKM62	72962	NUT, SELF-LOCKING.....	EA	3
						GROUP 04 CX-12199/APM-322 2W5		
10	14	PAHZZ	5935-00-779-8294	MS3116F14-19P	96906	CONNECTOR, PLUG, ELEC .....	EA	1
10	15	XDHZZ		1995985-801	94580	TAG, IDENTIFICATION.....	EA	1
10	16	XDHZZ		1995985-805	94580	TAG, IDENTIFICATION.....	EA	1
10	17	XDHZZ		1995985-803	94580	TAG, IDENTIFICATION.....	EA	1
10	18	PAHZZ	5935-00-067-6636	958152-10	94580	CONNECTOR, PLUG, ELEC .....	EA	1
10	19	XDHZZ		NAS1397K3N	80205	CLAMP, LOOP .....	EA	3
10	20	PAHZZ	5305-00-458-2832	NAS1635-06	80205	SCREW, MACHINE.....	EA	3
10	21	PAHZZ	5310-00-917-6105	F22NKM62	72962	NUT, SELF-LOCKING.....	EA	3
						GROUP 05 CX-12200/APM-322 2W7		
10	22	PAHZZ	5935-00-779-8295	MS3116F14-19P	96906	CONNECTOR, PLUG, ELEC .....	EA	1
10	23	PAHZZ	5305-00-458-2832	NAS1635-06-6	80205	SCREW, MACHINE.....	EA	3
10	24	PAHZZ	5310-00-917-6105	F22NKM62	72962	NUT, SELF-LOCKING.....	EA	3
10	25	XDHZZ		1995988-801	94580	TAG, IDENTIFICATION.....	EA	1
10	26	XDHZZ		NAS1397K3N	80205	CLAMP, LOOP .....	EA	3
10	27	XDHZZ		1995988-807	94580	TAG, IDENTIFICATION.....	EA	1
10	28	XDHZZ		1995988-803	94580	TAG, IDENTIFICATION.....	EA	1
10	29	PAHZZ	5935-00-067-6636	958152-10	94560	CONNECTOR, PLUG, ELEC .....	EA	1
10	30	PAHZZ	5970-00-950-6347	382A012-3	06090	TRANSITION.....	EA	1
10	31	XDHZZ		M23329-3-14	96906	CONNECTOR, PLUG, ELEC .....	EA	1
						GROUP 06 CX-12201/APM-322 2W9		
10	32	PAHZZ	5935-00-283-3724	MS3106E22-14P	96906	CONNECTOR, PLUG, ELEC .....	EA	1
10	33	XDHZZ		1995991-801	94580	TAG, IDENTIFICATION.....	EA	1
10	34	XDHZZ		NAS42DD3-22	80205	SPACER.....	EA	2
10	35	XDHZZ		1996495-1	94580	BRACKET.....	EA	1
					<b>31</b>			

SECTION II

TM 11-6625-1795-40P

(1) ILLUSTRATION		(2)	(3)	(4)	(5)	(6) DESCRIPTION	(7)	(8)
(a) FIG NO.	(b) ITEM NO.	SMR CODE	NATIONAL STOCK NUMBER	PART NUMBER	FSCM	USABLE ON CODE	U/M	QTY INC IN UNIT
10	36	PAHZZ	5305-00-197-8987	NAS1635-04-8	80205	SCREW, MACHINE.....	EA	6
10	37	XDHZZ		F22NM40	72962	NUT, SELF-LOCKING.....	EA	32
10	38	PAHZZ	5935-00-921-6140	225-21821-201	02660	CONNECTOR, PLUG, ELEC.....	EA	1
10	39	XDHZZ		10022829-101	94580	KEY, CONNECTOR.....	EA	1
10	40	XDHZZ		NAS1635-02-10	80205	SCREW, MACHINE.....	EA	2
10	41	XDHZZ		79NKM26	72962	NUT, SELF-LOCKING.....	EA	2
10	42	XDHZZ		NAS1397K6N	80205	CLAMP.....	EA	3
10	43	PAHZZ	5305-00-458-2832	NAS1635-06-6	80205	SCREW, MACHINE.....	EA	3
10	44	PAHZZ	5310-00-917-6105	F22NKM62	72962	NUT, SELF-LOCKING.....	EA	3
						GROUP 07 CX-12364/APM-322 2W10		
10	45	PAHZZ	5935-00-100-5910	21-20PGDH	95238	CONNECTOR, PLUG, ELEC.....	EA	1
10	46	XDHZZ		1995992-801	94580	TAG, IDENTIFICATION.....	EA	1
10	47	XDHZZ		1995992-805	94580	TAG, IDENTIFICATION.....	EA	1
10	48	XDHZZ		1995992-803	94580	TAG, IDENTIFICATION.....	EA	1
10	49	PAHZZ	5935-00-100-5911	21-20SGDH	95238	CONNECTOR, PLUG, .ELEC.....	EA	1
10	50	XDHZZ		NAS1397K5N	80205	CLAMP.....	EA	3
10	51	PAHZZ	5305-00-458-2832	NAS1635-06-6	80205	SCREW, .MACHINE.....	EA	3
10	52	PAHZZ	5310-00-917-6105	F22NKM62	72962	NUT, SELF-LOCKING.....	EA	3

## NATIONAL STOCK NUMBER PART NUMBER INDEX

**NOTE: LATEST NATIONAL STOCK NUMBER AND PART NUMBER ASSIGNMENTS ARE INCLUDED AT END OF****INDEX**

STOCK NUMBER	FIG.	ITEM	STOCK NUMBER	FIG.	ITEM
5310-00-045-3299	3	16	5305-00-458-2832	3	57
5841-00-045-6974	3	61	5305-00-458-2832	10	4
5305-00-054-5646	8	17	5305-00-458-2832	10	12
5905-00-060-6329	3	77	5305-00-458-2832	10	20
5910-00-064-0836	5	14	5305-00-458-2832	10	23
5910-00-064-0840	7	3	5305-00-458-2832	10	43
5910-00-064-7658	9	5	5305-00-458-2832	10	51
5935-00-065-6884	3	43	5905-00-458-9263	9	22
5950-00-067-6613	4	4	5995-00-471-8727	1	2
5950-00-067-6618	4	6	5995-00-477-3879	1	11
5950-00-067-6622	4	12	5995-00-477-3880	1	12
5950-00-067-6623	4	19	5995-00-477-3886	1	13
5950-00-067-6629	4	3	5995-00-477-3887	1	9
5950-00-067-6631	4	10	5995-00-477-3888	1	7
5935-00-067-6636	10	10	6625-00-484-5859	2	1
5935-00-067-6636	10	18	6625-00-484-5860	1	8
5935-00-067-6636	10	29	6625-00-492-6132	1	5
5935-00-067-6640	7	9	5995-00-498-3981	1	3
5910-00-067-6648	9	2	5940-00-500-7227	3	39
5910-00-067-6654	9	4	5940-00-502-7688	2	26
5910-00-067-6734	5	1	5940-00-557-1631	2	32
5961-00-068-2000	5	3	5905-00-577-1761	3	21
5961-00-066-2008	7	7	5935-00-577-2336	3	2
5935-00-068-4213	5	15	5905-00-577-9876	7	24
5910-00-068-9093	7	4	5935-00-578-3489	3	1
5961-00-068-9136	7	6	5365-00-580-5317	2	54
5961-00-068-9142	5	4	5310-00-595-7468	3	74
5961-00-068-9142	7	5	5940-00-614-0537	5	24
5961-00-068-9152	9	36	5310-00-614-3500	5	23
5910-00-068-9311	9	3	5310-00-614-3500	5	28
5935-00-069-7084	3	50	5310-00-614-3500	8	10
5910-00-070-2417	5	20	5930-00-615-9376	3	6
5841-00-070-4478	4	20	5310-00-622-1724	4	2
5841-00-070-4630	8	22	5310-00-622-1724	S	8
3120-00-070-4642	8	16	5365-00-632-3102	3	51
5841-00-070-4643	8	5	5961-00-646-4611	3	42
5905-00-070-5853	7	20	5930-00-655-1514	3	7
5905-00-070-5928	7	16	5935-00-655-4168	8	20
5905-00-070-5945	7	23	5905-00-681-5978	7	15
5961-00-078-0625	9	7	5905-00-681-6462	7	31
5961-00-078-0628	7	8	5905-00-683-2233	3	22
5961-00-078-0630	9	8	5905-00-683-2243	7	19
5935-00-078-0631	3	49	5905-00-683-2246	7	25
5310-00-081-8087	3	76	5935-00-683-2932	8	13
5961-00-087-5403	7	12	5355-00-685-4688	3	20
5305-00-088-9671	3	13	5905-00-686-3128	3	46
5935-00-100-5910	10	45	5905-00-686-3838	5	11
5935-00-100-5911	10	49	5905-00-686-9998	7	21
5905-00-102-5820	3	83	5905-00-691-0226	7	27
5905-00-102-5822	3	81	5310-00-720-7798	3	19
5905-00-102-5823	3	65	5310-00-720-7798	8	6
5905-00-108-8432	7	26	5310-00-722-5998	3	18
5905-00-113-2326	7	22	5905-00-727-5318	9	28
5935-00-123-5297	3	37	5905-00-727-5324	9	11
5340-00-152-0469	2	2	5905-00-727-5325	9	18
5905-00-171-1998	5	22	5905-00-727-5328	9	16
5841-00-179-4360	4	15	5905-00-727-5341	9	19
6625-00-179-4820	3	41	5905-00-727-5352	9	14
5905-00-195-5571	5	2	5905-00-728-6644	9	29
5905-00-195-6800	5	18	5905-00-730-1490	9	15
5305-00-197-8987	2	55	5905-00-730-1495	9	26
5305-00-197-8987	10	36	5905-00-730-1496	9	31
5310-00-208-4271	2	37	4920-00-730-3481	2	7
5950-00-233-7322	9	9	5905-00-752-3957	7	17
5305-00-239-9314	2	38	5905-00-763-9309	2	25
5905-00-279-1890	3	44	5905-00-767-2418	9	30
5905-00-279-3506	7	13	5905-00-768-3659	9	24
5905-00-279-3513	7	18	5935-00-779-8294	10	6
5935-00-283-3724	10	32	5935-00-779-8294	10	14
5961-00-408-0912	7	11	5935-00-779-8295	10	22
5961-00-408-0913	7	10	5935-00-780-8562	3	12
5305-00-409-2155	3	59	5975-00-784-4591	2	72
5935-00-426-5951	2	22	5905-00-800-0179	7	14
5935-00-426-5951	3	63	6210-00-808-8604	3	3
6625-00-437-7310	1	1	5940-00-812-2903	3	40
5305-00-458-2832	2	28	5905-00-813-6230	3	70
5305-00-458-2832	2	35	5305-00-814-1707	4	1
5305-00-458-2832	2	60	5905-00-814-8155	3	80
5305-00-458-2832	2	68	5905-00-817-7971	9	13
5305-00-458-2832	2	74	5841-00-823-9201	5	9



SECTION IV

TM 11-6625-1795-40P

NATIONAL STOCK NUMBER PART NUMBER INDEX

STOCK NUMBER	FIGURE NO.	ITEM NO.	STOCK NUMBER	FIGURE NO.	ITEM NO.
5841-00-823-9202	5	25	5310-00-917-6105	2	73
5935-00-825-8862	3	10	5310-00-917-6105	10	5
5910-00-831-7585	7	1	5310-00-917-6105	10	13
5905-00-834-6451	7	29	5310-00-917-6105	10	21
5935-00-835-3031	3	35	5310-00-917-6105	10	24
5310-00-837-1381	3	17	5310-00-917-6105	10	44
5905-00-843-2617	3	72	5310-00-917-6105	10	57
5905-00-843-6409	3	67	5935-00-921-6140	3	7
5910-00-857-9192	6	4	5935-00-921-6140	10	3
5961-00-869-3676	6	5	6625-00-922-6053	1	
5310-00-873-3195	4	9	5950-00-925-5249	9	10
5905-00-882-7889	2	24	5961-00-925-5432	5	5
5905-00-883-0915	3	71	5961-00-925-5442	9	35
5961-00-892-0909	5	21	5905-00-931-2360	5	12
6240-00-892-4420	3	38	5905-00-931-7590	3	66
5905-00-892-6323	3	68	5935-00-938-0359	1	10
5920-00-892-9311	3	33	5961-00-945-4800	5	6
5905-00-901-1583	2	18	5970-00-950-6347	10	30
5961-00-903-2878	9	6	5961-00-952-6703	6	1
5961-00-905-4815	9	34	5935-00-978-9434	2	48
5970-00-910-9683	7	35	5961-00-985-4484	5	10
5970-00-910-9683	9	38	6645-00-988-4426	7	4
5905-00-913-5016	9	25	5961-00-990-0104	3	34
5310-00-917-6105	2	29	5905-00-990-4530	9	33
5310-00-917-6105	2	36	5340-00-992-8139	2	3
5310-00-917-6105	2	61	5305-00-993-9189	4	14
5310-00-917-6105	2	69			

PART NUMBER	FSCM	FIG. NO.	ITEM NO.	PART NUMBER	FSCM	FIG. NO.	ITEM NO.
AN507C440R4	88044	4	14	MS24693C52	96906	3	13
AN507C440R6	88044	4	7	MS25036-15	96906	2	32
AN507C632R6	88044	4	11	MS25252NE2D	96906	3	38
B50S440	46384	8	8	MS25257-4	96906	3	3
CG3594	80058	1	2	MS3102F22-14SC	96906	3	14
CG3595U	80058	1	3	MS3106E22-14P	96906	10	32
CG3596APM322	80058	1	6	MS3112E14-19S	96906	3	10
CG3597U	80058	1	9	MS3112E16-26P	96906	3	35
CK06CW103M	81349	6	4	MS3116F14-19P	96906	10	
CX12198APM322	80058	1	11	MS3116F14-19P	96906	10	14
CX12199APM322	80058	1	13	MS3116F14-19S	96906	10	22
CX12200APM322	80058	1	7	MS35058-22	96906	3	7
CX12201APM322	80058	1	12	MS35059-21	96906	3	6
CX12202APM322	80058	1	8	MS35216-11	96906	8	17
CX12364APM322	80058	1	5	MS35216-2	96906	8	14
CY6789APM	80058	2	1	MS35216-3	96906	8	7
ES3330-5-1	71279	3	78	MS35338-42	96906	3	16
FHN26G1	81349	3	33	MS35425-19	96906	3	19
FR2-120SN0-115	06151	4	18	MS35431-1	96906	5	24
F22NKM40	72962	2	37	MS35489-46	96906	3	64
F22NKM62	72962	2	29	MS90078-24-1	96906	3	32
F22NKM62	72962	2	36	MS91528-1018	96906	3	20
F22NKM62	72962	2	61	MS91528-1K2B	96906	3	30
F22NKM62	72962	2	69	MX8531APM322	80058	1	4
F22NKM62	72962	2	73	M23329-3-07	96906	2	64
F22NKM62	72962	100	5	M23329-3-14	96906	10	31
F22NKM62	72962	10	13	M23329-3-21	96906	3	36
F22NKM62	72962	10	21	NAS1397K3N	80205	2	27
F22NKM62	72962	10	24	NAS1397K3N	80205	2	59
F22NKM62	72962	10	44	NAS1397K3N	80205	2	67
F22NKM62	72962	10	52	NAS1397K3N	80205	10	3
F22NM26	72962	3	74	NAS1397K3N	80205	10	19
F22NM40	72962	3	52	NAS1397K3N	80205	10	26
F22NM40	72962	4	8	NAS1397K32	80205	10	11
F22NM40	72962	10	37	NAS1397K5N	80205	10	50
F22NM62	72962	3	76	NAS1397K6N	80205	10	42
F22NM82	72962	3	53	NAS1397K8N	80205	2	34
F22UNC4-82	72962	2	12	NAS1407C3M3	80205	2	40
GSC149	59730	2	26	NAS1635-02-10	80205	10	40
G100B	72699	6	5	NAS1635-02-6	80205	3	73
JAN1N457	81350	3	42	NAS1635-04-10	80205	3	79
LAC632-2	46384	4	9	NAS1635-04-10P	80205	3	5
MS15795-807	96906	3	18	NAS1635-04-16	80205	2	3
MS16108-2A	96906	3	1	NAS1635-04-6	80205	2	45
MS16108-3A	96906	3	2	NAS1635-04-6P	80205	3	24
MS17322-6	96906	3	4	NAS1635-04-7	80205	2	42
MS23329-3-05	96906	10	1	NAS1635-04-8	80205	2	55
MS24585C5	96906	2	41	NAS1635-04-8	80205	10	36

## NATIONAL STOCK NUMBER PART NUMBER INDEX

PART NUMBER	FSCM	FIG. NO.	ITEM NO.	PART NUMBER	FSCM	FIG. NO.	ITEM NO.
NAS1635-04-8P	80205	3	34	RN60C2612F	81349	7	29
NAS1635-06	80205	10	20	RN60C60R4F	81349	2	18
NAS1635-06-16	80205	3	59	RN60D39R2F	81349	2	25
NAS1635-06-6	80205	2	28	RN65C1212F	81349	7	17
NAS1635-06-6	80205	2	35	RN70C2002F	81349	7	15
NAS1635-06-6	80205	2	60	RN70C4991F	81349	7	27
NAS1635-06-6	80205	2	68	RN70C5621J	81349	7	30
NAS1635-06-6	80205	2	74	RN70C7501F	81349	7	24
NAS1635-06-6	80205	3	57	RV6NAYSD102A	81349	3	21
NAS1635-06-6	80205	10	4	TS2932APM322	80058	1	1
NAS1635-06-6	80205	10	12	TXBP019-028	98978	7	34
NAS1635-06-6	80205	10	23	TY15	59730	2	72
NAS1635-06-6	80205	10	43	UG260FU	80058	2	30
NAS1635-06-6	80205	10	51	WE2-205E	99515	5	1
NAS1635-06-7P	80205	3	31	YE1620	09922	3	40
NAS1635-08-10	80205	2	9	ZSP2-204	19178	2	3
NAS1635-08-10P	80205	3	5	ZSP3-3001	19178	2	16
NAS1635-08-6P	80205	3	23	ZSP4-4001	19178	2	2
NAS1635-3-10	80205	2	13	ZSP6-602	19178	2	7
NAS388-10-10P	80205	3	25	ZSP7-701	19178	2	15
NAS391B10P	80205	3	26	ZSP9-9007	19178	2	4
NAS42DD3-22	80205	10	34	ZSP9-902	19178	2	5
NAS43DD0-16	80205	3	51				
NAS43DD0-8	80205	2	54				
NAS662C2R4	80205	4	1	1N4385	80131	6	1
NAS671C8	80205	3	17				
NAS696C06L-26	96906	8	4	10022147-803	94580	2	70
RC07GF100J	81349	9	13	10022164-101	94580	4	21
RC07GF102J	81349	7	31	10022242-101	94580	2	20
RC07GF113J	81349	3	46	10022268-101	94580	3	27
RC07GF151J	81349	7	19	10022272-101	94580	3	29
RC07GF273J	81349	5	11	10022273-101	94580	2	19
RC07GF472J	81349	7	21	10022289-101	94580	3	28
RC07GF473J	81349	7	25	10022504-803	94580	2	33
RC07GF563J	81349	7	14	10022829-101	94580	10	39
RC07GF910J	81349	3	22	10023241-101	94580	3	9
RC20GF221J	81349	7	18	10026700-101	94580	2	6
RC20GF332J	81349	7	13	1992555-8500	94580	7	22
RC20GF333J	81349	5	22	1992555-9000	94580	7	26
RC20GF391J	81349	3	44	1995938-1	94580	2	10
RC20GF561J	81349	5	18	1995938-801	94580	2	11
RC20GF680J	81349	5	2	1995939-1	94580	2	50
				1995939-801	94580	2	53
RE60G18R7	81349	3	83	1995942-1	94580	3	45
RE60G2151	81349	3	82	1995943-1	94580	3	41
RE60G2491	81349	3	66	1995944-1	94580	3	15
RE60G2740	81349	3	81	1995945-1	94580	3	84
RE60G5360	81349	3	65	1995946-1	94580	3	56
RE60G5900	81349	3	80	1995947-1	94580	3	58
RE65G1401	81349	3	70	1995947-2	94580	3	62
				1995949-1	94580	2	8
RE65G5621	81349	3	77	1995975-1	94580	2	44
RE65G6340	81349	3	67	1995977-1	94580	2	39
RE65G7R15	81349	3	68	1995982-803	94580	10	2
RE70G2001	81349	3	72	1995983-801	94580	10	7
RE70G80R6	81349	3	71	1995983-803	94580	10	9
				1995983-807	94580	10	8
RL07S102J	81349	9	19	1995984-803	94580	2	65
				1995985-801	94580	10	15
R107S182J	81349	9	14	1995985-803	94580	10	17
R107S201J	81349	9	33	1995985-805	94580	10	16
				1995986-801	94580	2	31
				1995986-803	94580	2	21
R107S242J	81349	9	29	1995986-805	94580	2	17
R107S271J	81349	9	28	1995988-801	94580	10	25
				1995988-803	94580	10	28
RL07S302J	81349	9	24	1995988-807	94580	10	27
RL07S331J	81349	9	20	1995989-801	94580	2	63
RL07S471J	81349	9	11	1995989-803	94580	2	57
RL07S472J	81349	9	32	1995989-805	94580	2	56
RL07S511J	81349	9	18	1995991-801	94580	10	33
RL07S512J	81349	9	15	1995992-801	94580	10	46
RL07S562J	81349	9	30	1995992-803	94580	10	48
RL07S681J	81349	9	16	1995992-805	94580	10	47
RL07S750J	81349	9	27	1996483-1	94580	3	8
RL07S822J	81349	9	26	1996495-1	94580	10	35
RL07S912J	81349	9	31	1996499-1	94580	2	23
RL32S152J	81349	9	25	1996506-1	94580	2	14
RN60C1580F	81349	2	24	1996508-3	94580	2	49
RN60C1882F	81349	7	28	1996509-801	94580	2	46

## NATIONAL STOCK NUMBER PART NUMBER INDEX

PART NUMBER	FSCM	FIG. NO.	ITEM NO.	PART NUMBER	FSCM	FIG. NO.	ITEM NO.
1996510-1	94580	2	43	956810-1	94580	3	49
1996511-1	94580	3	55	958152-10	94580	10	10
1996515-1	94580	2	47	958152-10	94580	10	18
2000495-1	94580	8	16	958152-10	94580	10	29
2000495-2	94580	8	5	958152-9	94580	8	11
2000496-3	94580	9	8	959145-1	94580	4	4
21-20PGDH	95238	10	45	959146-1	94580	4	6
21-20SGDH	95238	10	49	959147-1	94580	4	12
225-21821-201	02660	3	75	959148-1	94580	4	19
225-21821-201	02660	10	38	959149-1	94580	4	3
2441	71785	3	60	959150-1	94580	4	10
2504-05-00	78189	3	11	959191-1	94580	4	5
27-19	02660	2	66	959431-1	94580	7	9
27-21	74868	8	13	959431-2	94580	5	15
27-7	02660	2	62	959492-1	94580	9	36
27-9	74868	8	20	959494-1	94580	9	35
31-31S	74868	2	58	959496-1	94580	7	12
31-318	74868	3	12	959524-1	94580	9	6
31-759	02660	3	39	959525-10	94580	5	3
3388-1-03	71279	2	48	959525-13	94580	7	7
382A012-3	06090	10	30	959525-7	94580	5	19
3875	61957	4	17	959525-9	94580	9	7
437104-18	94580	2	51	959526-16	94580	7	6
437250-3	94580	a	3	959526-20	94580	5	21
437752-6	94580	5	7	959526-22	94580	5	10
440890	94580	3	48	959527-1	94580	5	4
473623-4	94580	4	13	959527-1	94580	7	5
473623-5	94580	8	15	959798-2	94580	5	6
478020-19S	94580	9	5	959799-1	94580	5	5
479511-38	94580	5	13	960059-7	94580	9	10
479511-39	94580	5	14	960059-9	94580	9	9
479511-40	94580	5	20	960140-1	94560	3	43
479511-41	94580	7	3	960161-4	94580	3	50
50-075-0701	98291	2	71	960238-1	94580	7	8
50-128-0029	98291	3	37	962365-1	94580	5	9
50-328-3188	98291	2	22	962366-1	94580	5	25
50-328-3188	98291	3	63	962367-1	94580	7	33
68-1660-26	72962	4	2	962368-1	94580	5	26
68-1660-26	72962	5	8	962369-3	94580	4	20
68-1660-40	72962	5	23	962370-3	94580	4	15
68-1660-40	72962	8	10	962507-1	94580	8	1
681660-40	72962	5	28	962521-1	94580	9	37
79NCFMA1-26	72962	8	6	962522-1	94580	8	21
79NKM26	72962	10	41	962523-1	94580	5	27
88001	17069	7	35	962564-1	94580	8	12
88001	17069	9	38	962565-1	94580	8	19
930940-4	94580	7	20	962566-1	94580	8	2
930940-6	94580	7	16	962566-801	94580	8	9
930940-9	94580	7	23	962567-801	94580	8	18
935707-20R0	94580	5	12	962568-1	94580	3	61
940242	94580	2	52	962590-3	94580	3	85
942339-62	94580	9	3	966531-14	94580	6	2
955914-19	94580	9	4	973773-1	94580	8	22
955914-8	94580	9	2	983416-804	94580	4	16
956684-1	94580	9	34	983451-1	94580	6	6
956686-1	94580	7	11	983454	94580	5	16
956688-1	94580	7	10	983454-1	94580	7	37
956794-1	94580	7	1	983455-2	94580	5	17
956794-3	94580	7	2	983455-2	94580	7	36
956794-5	94580	7	4	984795-1	94580	9	1

**NATIONAL STOCK NUMBER PART NUMBER INDEX**  
**LATEST NATIONAL STOCK NUMBER ASSIGNMENTS**

STOCK NUMBER	FIG.	ITEM	STOCK NUMBER	FIG.	ITEM
5961-00-068-1998	5	19	5935-00-518-9548	2	62
5905-00-184-7705	9	23	5355-00-556-0145	3	30
5905-00-195-6800	7	32	5935-00-573-5709	2	66
5905-00-247-8732	3	47	5935-00-686-0271	3	14
5905-00-458-9267	9	12	5905-00-730-1489	9	32
5995-00-477-3878	1	6	5961-00-772-7706	6	7
5905-00-491-2638	9	21	5935-00-850-9157	2	30

**LATEST PART NUMBER ASSIGNMENTS**

PART NUMBER	FSCM	FIG. NO.	ITEM NO.	PART NUMBER	FSCM	FIG. NO.	ITEM NO.
JAN1N4384	81349	6	7	R1R07C221GR	81349	9	12
RCR32G471JS	81349	3	47	R1R07C222GR	81349	9	23
RC20GF561J	81349	7	32	R1R07C272GR	81349	9	21
R1R07C101GR	81349	9	22				

**ADDITIONAL LATEST NATIONAL STOCK NUMBER ASSIGNMENTS**

STOCK NUMBER	FIG. NO.	ITEM NO.
5961-00-105-7731	6	3
5905-00-306-1543	3	69
5905-00-450-8530	9	17

**ADDITIONAL LATEST PART NUMBER ASSIGNMENTS**

PART NUMBER	FSCM	FIG. NO.	ITEM NO.
JAN1N4383	81349	6	3
RE65G63R4	81349	3	69
RLR07C151GR	81349	9	17
UG1899U	80058	1	10

\*US. GOVERNMENT PRINTING OFFICE: 1977-703-128.505

By Order Of the Secretary Of the Army:

Official:

J. C. PENNINGTON  
*Brigadier General, United States Army*  
*The Adjutant General*


BERNARD W. ROGERS  
*General, United States Army*  
*Chief of Staff*

Distribution:

To be distributed in accordance with DA Form 12-36A, Direct and General Support Maintenance requirements for AN/APM-322.

GPO 905-551

RECOMMENDED CHANGES TO EQUIPMENT TECHNICAL PUBLICATIONS



## SOMETHING WRONG WITH THIS PUBLICATION?

THEN... JOT DOWN THE DOPE ABOUT IT ON THIS FORM, CAREFULLY TEAR IT OUT, FOLD IT AND DROP IT IN THE MAIL!

FROM: (PRINT YOUR UNIT'S COMPLETE ADDRESS)

---

DATE SENT

PUBLICATION NUMBER

PUBLICATION DATE

PUBLICATION TITLE

BE EXACT... PIN-POINT WHERE IT IS				IN THIS SPACE TELL WHAT IS WRONG AND WHAT SHOULD BE DONE ABOUT IT:
PAGE NO.	PARA-GRAPH	FIGURE NO.	TABLE NO.	

PRINTED NAME, GRADE OR TITLE, AND TELEPHONE NUMBER

SIGN HERE:

TEAR ALONG PERFORATED LINE

DA FORM 2028-2  
1 JUL 79

PREVIOUS EDITIONS ARE OBSOLETE.

P.S.—IF YOUR OUTFIT WANTS TO KNOW ABOUT YOUR RECOMMENDATION MAKE A CARBON COPY OF THIS AND GIVE IT TO YOUR HEADQUARTERS.

